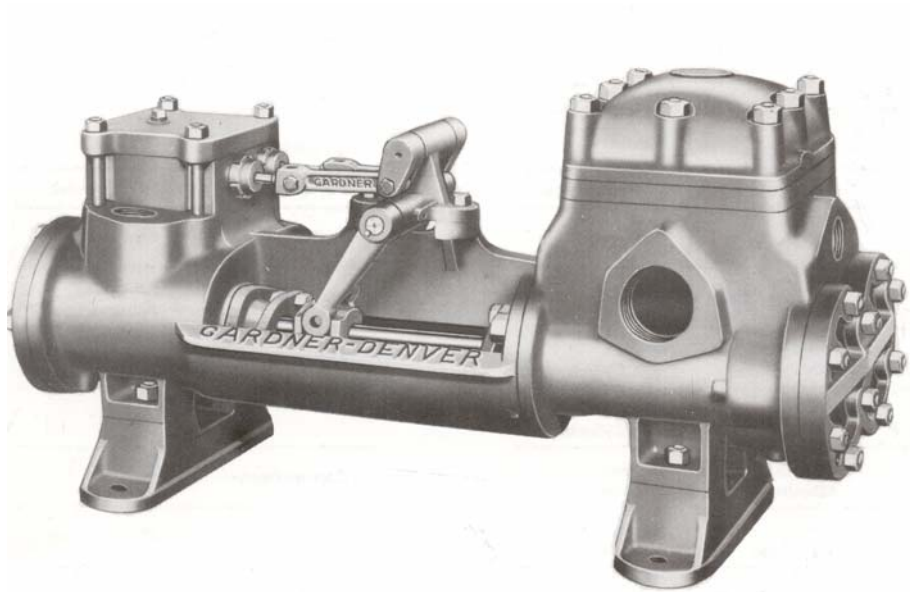




DAG (AG-AG) DUPLEX STEAM PUMP

Air • Steam • Gas Driven



SPECIFICATIONS:

No. of Pistons: 2
Stroke Length: 6"
Pump Weight: 735 lbs.
(333 kgs.)

Fluid Cylinder
Connections
Suction: 3"
Discharge: 2"

SIZES AND RATINGS FOR GENERAL SERVICE

SIZE						Fluid End Symbol	Steam End Symbol	*DISPLACEMENT								Fluid End Maximum Pressure	
Steam Cylinder Diameter		Fluid Cylinder Diameter		Stroke Length				Per Revolution		Normal			Maximum				
in	mm	in	mm	in	mm			gal.	liter	RPM	GPM	LPM	RPM	GPM	LPM		
REMOVABLE BOLTED-IN DESIGN																	
6	152.4	4	101.6	6	152.4	AG	AG	1.26	4.77	45	56.9	215	90	114	431	250	17.58

* Theoretical displacement with rods deducted (no slippage considered).

Specifications subject to change without notice.

Fluid pressures obtainable in service depend upon the available steam or air pressure and the ratio between the areas of steam and fluid cylinders. STANDARD FITTINGS – Pumps are furnished with all necessary stuffing box packing, valve rod packings, fibrous piston packings for water only for temperatures up to 180°F, drain valves and plugs, and grease cups for rocker shaft bearings.



DAG (AG-AG) Duplex Steam Pump Air • Steam • Gas Driven

STANDARD EQUIPMENT

- Rods and pistons.
- Liners and valves.
- Wood skids.
- All necessary drain cocks and plugs.

OPTIONAL EQUIPMENT

- Lubricator
- Fluid liner pullers
- Valve seat pullers
- Surge chamber
- Steel skid
- Stainless steel valves

MODEL DESIGNATIONS	
MODEL	AG-AG
Standard Fitted	DAGK
Oil Service Fitted	DAGD
All Iron Fitted	DAGJ
Fully Bronze Fitted (Water Service)	DAGF
Diameter of Steam Cylinder	6"
Diameter of Fluid Cylinder	4"
Length of Stroke	6"
Fluid Cylinder Type	Cast Iron One Piece

MATERIAL SPECIFICATIONS

COMPONENT	GENERAL SERVICE	BOILER FEED	OIL SERVICE	WATER SERVICE
Cylinder	Cast Iron	Cast Iron	Cast Iron	Cast Iron
Liners	Hardened Steel	Bronze	Hardened Steel	Bronze
Suction Manifold	Integral with Cylinder	Integral with Cylinder	Integral with Cylinder	Integral with Cylinder
Discharge Manifold	Integral with Cylinder	Integral with Cylinder	Integral with Cylinder	Integral with Cylinder
Packing	Braided Polymer	Braided Polymer	Braided Polymer	Braided Polymer
Piston	Iron Follower Type	Bronze Follower Type	Iron Solid Type	Bronze Follower Type
Piston Rod	Hardened Steel	Bronze	Hardened Steel	Bronze
Stuffing Box	Cast Iron	Cast Iron	Cast Iron	Cast Iron
Valve	Iron Cap Type	Bronze Cap Type	Iron Cap Type	Bronze Cap Type
Valve Seats	Iron	Bronze	Iron	Bronze

STEAM END	
COMPONENT	MATERIAL
Cylinder	Cast Iron
Piston	Cast Iron
Packing	Braided Polymer
CONNECTIONS	
Inlet	1"
Exhaust	1 ½"

*Materials listed are furnished as standard equipment. Alternate materials available upon request.

**Gardner
Denver**

1800 Gardner Expressway
Quincy, Illinois 62301
(800)682-9868 Fax:(217)224-7814



119 Nolan Road
Broussard, LA 70518
(337)837-2701 Fax:(337)837-3250
www.candbsales.com sales@candbsales.com

