



Custom Design and Packaging of  
Oilfield and Industrial Equipment

A Single Source Provider of Compressors, Pumps, and Blowers

Pumps

Air Compressors

Gas Compressors

Process Compressors

Vapor Recovery Systems

Specialty Fabrication

Parts and Services



119 Nolan Road  
Broussard, Louisiana 70518

337-837-2701  
Fax: 337-837-3250  
E-mail: [sales@candbsales.com](mailto:sales@candbsales.com)

Sales

Service

Parts

Leasing

Engineering

Packaging

# Compressor Packages



## DIESEL AIR COMPRESSOR

Industrial Duty  
750 SCFM, 55 psig discharge, 2,200 RPM, 125 HP  
Gardner Denver Rotary Screw Compressor  
Cummins Diesel Turbocharged Air-Cooled Engine  
75 Gallon Fuel Tank  
Structural Steel Skid with Pollution Pan and Enclosures

Diesel Engine Driven Air Compressor

## OFFSHORE VAPOR RECOVERY PACKAGE

150 HP TEFC Motor Drive  
Suction Scrubber with Filter Elements (FSH4200)  
GEA Aftercooler and Oil Cooler  
Yamada Air Operated Scrubber Pump  
Custom PLC Controls and Instrumentation  
Offshore Skid Structure with Pollution Containment



Electric Motor Driven Rotary Screw Compressor



## HEAVY DUTY WCG COMPRESSOR

High Capacity/ Low Pressure  
402 SCFM, 50 psig, 872 RPM Pump, 72 HP  
Gardner Denver Air-Cooled Reciprocating Compressor  
with Regenerative Dryer  
Deutz (D14L05) Diesel Engine  
2,300 RPM Engine, 88 HP

Diesel Engine Driven Reciprocating Air Compressor

## TANK BATTERY VAPOR RECOVERY COMPRESSOR

Continuous Duty  
10 HP TEFC Electric Motor Drive  
Suction Scrubber with Elements  
Murphy Control Panel with Gauges and  
Shutdowns  
Yamada Air Operated Scrubber Pump  
Skid Structure with Pollution Containment



Electric Motor Driven Reciprocating Gas Compressor

# Engineered Pump Packages

## PAH PUMP PACKAGE



The pump package is designed to operate in work over service with the following design conditions (4.50" pistons)

6.5 BPM, 1,650 psig discharge, 175 RPM Pump Speed, 310 HP

Equipment: Gardner Denver PAH Pump, Detroit Series 60 Engine, Allison HT-750DR Trans.

## CUTTINGS INJECTION PUMP PACKAGE

The Pump Package is designed for cuttings injection service applications (3.50" plungers)

(4<sup>th</sup> Gear) 5.0 BPM, 3,500 psig discharge, 284 RPM Pump Speed, 500HP, 1,900 RPM Engine

(1<sup>st</sup> Gear) 0.95 BPM, 5,000 psig discharge, 40 RPM Pump Speed, 130 HP, 1,900 RPM Engine



Equipment: Gardner Denver GD-600 Pump, Cummins QSX15 Engine, Allison 4700OFS Trans.

## ELECTRIC MOTOR DRIVEN INJECTION PUMP PACKAGE



The Pump Package is designed to operate in cuttings injection services. (4.00" plungers)

247 GPM, 3,000 psig discharge, 252 RPM Pump Speed, 480 HP, 1,200 RPM Motor

125 GPM, 3,500 psig discharge, 126 RPM Pump Speed, 285 HP, 600 RPM Motor

Equipment: Gardner Denver GD-600 Pump, TECO Westinghouse 600 HP Electric Motor

## DAPC INJECTION PUMP PACKAGE

This unit is designed to operate drilling mud service with the following design conditions (3" plungers) with a 1200 RPM motor:

108 GPM, 1,000 psig discharge, 236 RPM Pump Speed, 80 HP



Equipment: Gardner Denver TEED Triplex, MCM 3x4x13 Centrifugal Pump, Hyundai 100 HP Motor, Hyundai 15 HP Motor



# Engineered Products

## TACX



### Specifications:

Duty Cycle:	Intermittant
Style:	Triplex
Frame Rating:	90 BHP
Max Speed:	600 RPM
Stroke Length:	3"
Rod Load:	8,000 lbs
Oil Capacity:	6 gallons
Pump Weight:	1,900 lbs

## TEE XTREME



### Specifications:

Maximum BHP:	225
Maximum RPM:	350
No. of Plungers:	3
Stroke Length:	5 in.
Plunger Load:	47,500 lbs
Gear Ratio:	5.61 to 1
Oil Capacity:	12 gallons
Pump Weight:	4,500 lbs

## Compressor Package

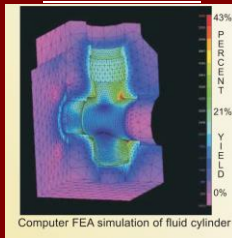


### Specifications:

Horsepower:	30
Max RPM:	1,550
Max CFM:	180
Discharge (psig):	30
Electric Starter (VDC):	12

## Custom Fluidends

### SAE4330



Hardened-steel, wing guided valves  
Colmony plungers (1.75" to 2.75")  
Non-adjustable, high-performance packing  
Suction Connection: 4-in, 150-lb. Flange  
Discharge connection: 2-in, 1502 WECO

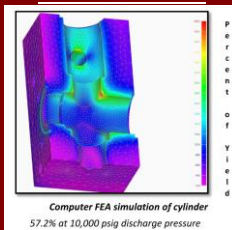
## Flow Counter



Displays Pump Rates in Any Unites (GPM, BPD, LPM) and Cumulative Volume

Specially Designed for All Makes and Models of Piston and Plunger Pumps

### SAE 4140



Mono-block Cylinder  
4-Bolt Valve Covers (Suction & Discharge)  
Bolt-in stuffing Boxes (CS, SS, AIBr material)  
Colmony Coated Plungers (1.0" to 3.0")  
Stainless Steel Full-Opening, Caged Valves

## Lubrication

### Planet Green Hydraulic Fluids

High Viscosity Index/ Long Life/ Carbon & Varnish Control/ High Film Strength

### Premium Pump Lubricant

High Flash & Auto Ignition Points/ Low Volatility/ Excellent Film Strength

### Semi-Synthetic Biodegradable Pump Lubricant

Long Fluid Life/ Excellent Water Separator/ Rust Control/ Great Wear Protection

For all makes and models well servicing, stimulation, & disposal pumps.

Sales

Service

Parts

Leasing

Engineering

Packaging