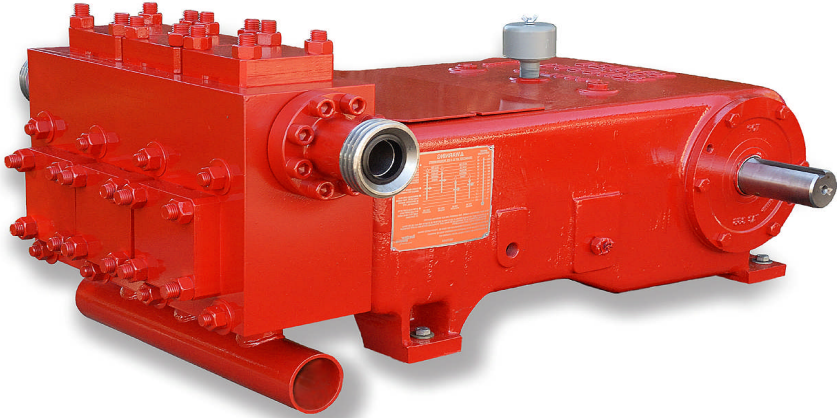




MEDIUM-SIZED WELL SERVICE PUMP



SPECIFICATIONS

Duty Cycle: Intermittant
Style: Triplex
Frame Rating: 90 BHP
Maximum Speed: 600 RPM
Stroke Length: 3"
Rod Load: 8,000 lbs
Oil Capacity: 6 gallons
Pump Weight: 1,900 lbs



PERFORMANCE AT SPEED SHOWN

PERFORMANCE AT SPEED SHOWN													
		100 RPM		200 RPM		300 RPM		400 RPM		500 RPM		600 RPM	
Plunger Size (in)	Gallons/Revolution	Flow (gpm)	Pressure (psig)	Flow (gpm)	Pressure (psig)	Flow (gpm)	Pressure (psig)	Flow (gpm)	Pressure (psig)	Flow (gpm)	Pressure (psig)	Flow (gpm)	Pressure (psig)
1.000	0.031	3	10000	6	9000	9	8000	12	8000	16	7000	19	6500
1.250	0.048	5	6500	10	6500	14	6519	19	6519	24	5750	29	4800
1.500	0.069	7	4527	14	4527	21	4527	28	4527	35	4025	41	3354
1.750	0.094	9	3326	19	3326	28	3326	38	3326	47	2955	56	2462
2.000	0.122	12	2546	24	2546	37	2546	49	2546	61	2277	73	1897
2.250	0.155	16	2012	31	2012	47	2012	62	2012	78	1792	93	1493
2.500	0.191	19	1630	38	1630	57	1630	76	1630	96	1454	115	1212
2.750	0.231	23	1347	46	1347	69	1347	92	1347	116	1202	139	1002
3.000	0.275	28	1132	55	1132	83	1132	110	1132	138	1010	165	842
Power		20 Horsepower		40 Horsepower		90 Horsepower		90 Horsepower		90 Horsepower		90 Horsepower	

Note: Ratings are based on 90% mechanical efficiency and 100% volumetric efficiency.

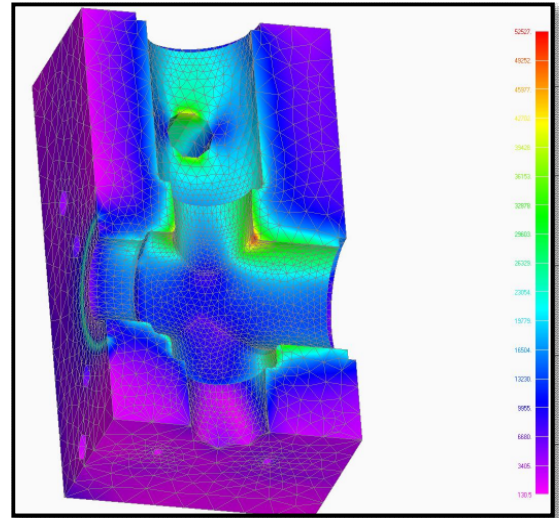
Note: Intermittent duty cycle defined as full load for 30 minutes followed by no load for 30 minutes



MEDIUM-SIZED WELL SERVICE PUMP

Power Unit by Gardner Denver:

- Heavy-duty cast iron frame
- Crankshaft construction
- Left or right hand drive
- Solid connecting rods
- Clamp-style plunger connections
- Forced crosshead slide lubrication
- Oil circulation pump, filter, & cooler
- Planetary gear reducer (optional)



P
e
r
c
e
n
t
o
f
Y
i
e
l
d

*Computer FEA simulation of cylinder
57.2% at 10,000 psig discharge pressure*

Fluid end by C & B Pumps & Compressors:

- Forged SAE 4140 mono-block cylinder
- Discharge connections on either side
- Suction connections on either side
- 4-bolt valve covers (suction and discharge)
- Bolt-in stuffing boxes (CS, SS, AlBr material)
- Colmony coated plungers (1.0" to 3.0")
- Non-adjustable *SuperGold* packing
- Stainless steel full-opening, caged valves

Optional Equipment:

- Dual discharge connections
- Valve cover gauge connection
- Relief valve and pressure gauge
- Mechanical lubricator for packing
- Stroke Counter and flow totalizer
- Tungsten carbide plungers
- Pulsation Dampeners
- Pump tools and pullers

Physical Dimensions:

- Length 48", Width 36", Height: 30"
- Suction Connection: 3" pipe (plain-end)
- Discharge Connection: 2" 1502 WECO
- 2.625" drive shaft with keyway

**YOUR EXCLUSIVE
SOURCE FOR THE**



www.candbsales.com

119 Nolan Road, Broussard, Louisiana 70518
(337) 837-2701 fax: (337) 837-3250 sales@candbsales.com