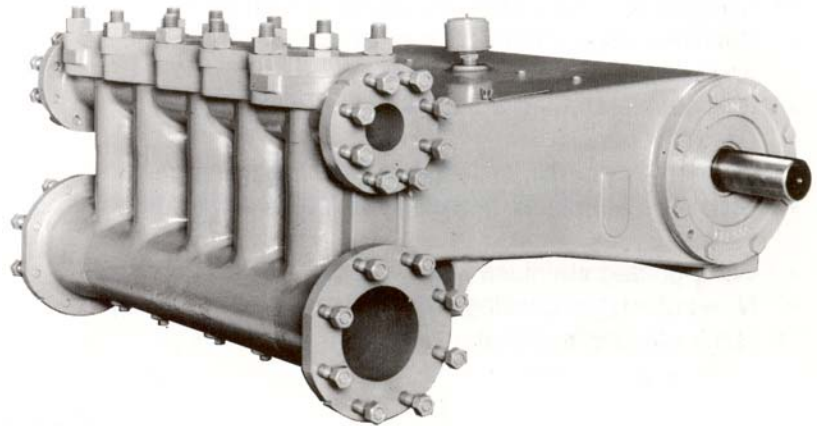




## GD-135Q (QBX) QUINTUPLEX CONTINUOUS DUTY PLUNGER PUMP

### SPECIFICATIONS:

**Maximum BHP: 135 (101 kw)**  
**Maximum RPM: 500**  
**No. of Plungers: 5**  
**Stroke Length: 3.5 in. (89 mm)**  
**Plunger Load: 5,500 lbs. (2,495 kg)**  
**Discharge Hydrostatic Test Pressure**  
     **LP – 2,960 psi (208 kg/cm<sup>2</sup>)**  
     **MP – 6,250 psi (439 kg/cm<sup>2</sup>)**  
**Oil Capacity: 10 gal. (58 liters)**  
**Pump Weight: 1,875 lbs. (851 kg)**



### PERFORMANCE RATINGS

Plunger Size		Maximum Pressure		Displacement per revolution		Gallons Per Minute at the following RPM:											
						175		200		300		400		450		500	
in.	mm	PSI	kg/cm <sup>2</sup>	gal.	liters	GPM	LPM	GPM	LPM	GPM	LPM	GPM	LPM	GPM	LPM	GPM	LPM
<b>Low Pressure Aluminum Bronze (QBXA) Fluid End</b>																	
3	76	780	55	0.536	2.027	94	355	107	405	161	608	214	811	241	912	268	1014
2 3/4	70	925	65	0.450	1.703	79	298	90	341	135	511	180	681	203	767	225	852
2 1/2	64	1120	79	0.372	1.408	65	246	74	282	112	422	149	563	167	634	186	704
2 1/4	57	1385	97	0.301	1.140	53	200	60	228	90	342	120	456	136	513	151	570
2	51	1480	104	0.238	0.901	42	158	48	180	71	270	95	360	107	405	119	450
<b>Medium Pressure Aluminum Bronze (QBXB) Fluid End</b>																	
2 1/4	57	1385	97	0.301	1.140	53	200	60	228	90	342	120	456	136	513	151	570
2	51	1750	123	0.238	0.901	42	158	48	180	71	270	95	360	107	405	119	450
1 3/4	45	2285	161	0.182	0.690	32	121	36	138	55	207	73	276	82	310	91	345
1 1/2	38	3110	219	0.134	0.507	23	89	27	101	40	152	54	203	60	228	67	253

Based on 90% mechanical efficiency and 100% volumetric efficiency.  
For applications within shaded area contact Customer Service

Specifications subject to change without notice.



## GD-135Q (QBX) QUINTUPLEX CONTINUOUS DUTY PLUNGER PUMP

### STANDARD EQUIPMENT

- Oil level gauge.
- Crankshaft type construction.
- Double-extended crankshaft 3" (7.62 mm) dia., 5.5" (13.97 mm) long.
- Keyway (L x W x H) 5" x .75" x .43" (12.7 x 1.9 x 1.09 mm).
- Turbo lubrication.
- Flanged suction and discharge on either side.
- Stainless steel clamp connections between plungers and push rods.
- Removable stuffing boxes with threaded glands.
- Cradle cover.
- Colmonoy, ceramic, or tungsten carbide plungers.
- Disc style aluminum bronze, stainless steel, or monel valves.
- Wing-guided stainless steel valves.
- Non-adjustable packing standard. Kevlar or double stack packing optional.

### ACCESSORIES

- Mechanical lubricator for stuffing box packing.
- Suction stabilizers.
- Discharge pulsation dampeners.
- Discharge pressure relief valve.
- Fabricated steel skid under pump and drive.
- V-belt drive assembly.
- Totally enclosed metal belt guard (OSHA approved).
- Valve seat puller.
- Valve seat driver.
- Valve cage wrench.
- Companion flanges.

	Suction Manifold	Discharge Manifold
QBXA	6" 150# ANSI	3" 600# ANSI
QBXB	4" 150# ANSI	2" 1500# ANSI

**NOTE:** All installations must contain a pressure relief valve in the discharge line near the pump to help prevent breakage.

**Dimensions: Length 43.85", Width 52.36", Height 23.52"**

### MATERIAL SPECIFICATIONS

SERVICE	TYPE	CYLINDER	PACKING	STUFFING BOX	COMPONENT	MATERIAL
QBXA	Low Pressure	ASTM B-148-9D Aluminum Bronze	Buna-N Non-Adjustable Type	ASTM B-148-9D Aluminum Bronze	Crankshaft Connecting Rods Crossheads Frame	Cast Nodular Iron Cast Nodular Iron Cast Nodular Iron Cast Iron
QBXB	Medium Pressure	ASTM B-148-9D Aluminum Bronze	Buna-N Non-Adjustable Type	ASTM B-148-9D Aluminum Bronze	Bearing-Main (outer) Bearing-Main (ctr.) Rod Bearings Bushing-Crosshead	Tapered Roller Straight Roller Steel Lined with Tin & Babbit Bronze

\*Materials listed are furnished as standard equipment. Alternate materials available upon request.

**Gardner  
Denver**

1800 Gardner Expressway  
Quincy, ILLinois 62301  
(800)682-9868 Fax:(217)224-7814



119 Nolan Road  
Broussard, LA 70518 **PUMPS & COMPRESSORS, LLC**  
(337)837-2701 Fax:(337)837-3250  
www.candbsales.com sales@candbsales.com

