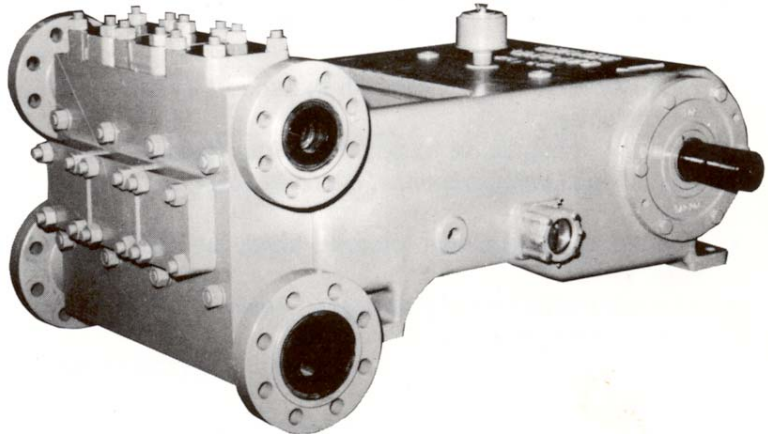




GD-65T (TAC) CONTINUOUS DUTY PLUNGER PUMP

SPECIFICATIONS:

Maximum BHP: 65.5 (49 kw)
Maximum RPM: 500
No. of Plungers: 3
Stroke Length: 3 in. (76 mm)
Plunger Load: 5,200 lbs. (2,360 kg)
Discharge Hydrostatic Test Pressure
 LP – 3,300 psi (232 kg/cm²)
 MP – 4,500 psi (316 kg/cm²)
 HP – 7,500 psi (527 kg/cm²)
Oil Capacity: 6 gal. (23 liters)
Pump Weight: 1,790 lbs. (812 kg)



PERFORMANCE RATINGS

| Plunger Size | | Maximum Pressure | | Displacement per revolution | | Gallons/Liters per Minute at the following RPM: | | | | | | | | | | | |
|--|----|------------------|--------------------|-----------------------------|-------|---|-----|-----|-----|-----|-----|-----|-----|-----|-----|-----|-----|
| | | | | | | 175 | | 200 | | 300 | | 400 | | 450 | | 500 | |
| in. | mm | PSI | kg/cm ² | Gal. | Ltr. | GPM | LPM | GPM | LPM | GPM | LPM | GPM | LPM | GPM | LPM | GPM | LPM |
| LP CAST ALUMINUM BRONZE (TACA) OR CARBON STEEL (TACE) FLUID END | | | | | | | | | | | | | | | | | |
| 3.00 | 76 | 675 | 47 | 0.275 | 1.041 | 48 | 182 | 55 | 208 | 83 | 312 | 110 | 416 | 124 | 468 | 138 | 520 |
| 2.75 | 70 | 805 | 56 | 0.231 | 0.875 | 40 | 153 | 46 | 175 | 69 | 263 | 93 | 350 | 104 | 394 | 116 | 438 |
| 2.50 | 64 | 975 | 68 | 0.191 | 0.724 | 33 | 127 | 38 | 145 | 57 | 217 | 77 | 290 | 86 | 326 | 96 | 362 |
| 2.25 | 57 | 1190 | 83 | 0.155 | 0.586 | 27 | 103 | 31 | 117 | 46 | 176 | 62 | 234 | 70 | 264 | 77 | 293 |
| 2.00 | 51 | 1520 | 106 | 0.122 | 0.463 | 21 | 81 | 24 | 93 | 37 | 139 | 49 | 185 | 55 | 208 | 61 | 232 |
| 1.75 | 44 | 2000 | 140 | 0.094 | 0.356 | 16 | 62 | 19 | 71 | 28 | 107 | 38 | 142 | 42 | 160 | 47 | 178 |
| 1.50 | 38 | 2220 | 155 | 0.069 | 0.261 | 12 | 46 | 14 | 52 | 21 | 78 | 28 | 104 | 31 | 118 | 35 | 131 |
| MP CARBON STEEL (TACC) FLUID END | | | | | | | | | | | | | | | | | |
| 2.25 | 57 | 1190 | 83 | 0.155 | 0.587 | 27 | 103 | 31 | 117 | 47 | 176 | 62 | 235 | 70 | 264 | 78 | 293 |
| 2.00 | 51 | 1520 | 106 | 0.122 | 0.462 | 21 | 81 | 24 | 92 | 37 | 139 | 49 | 185 | 55 | 208 | 61 | 231 |
| 1.75 | 44 | 2000 | 140 | 0.094 | 0.356 | 16 | 62 | 19 | 71 | 28 | 107 | 38 | 142 | 42 | 160 | 47 | 178 |
| 1.50 | 38 | 2220 | 155 | 0.069 | 0.261 | 12 | 46 | 14 | 52 | 21 | 78 | 28 | 104 | 31 | 118 | 35 | 131 |
| HP BLOCK ALUMINUM BRONZE (TACB) FLUID END | | | | | | | | | | | | | | | | | |
| 1.50 | 38 | 2680 | 188 | 0.069 | 0.261 | 12 | 44 | 14 | 52 | 21 | 78 | 28 | 104 | 31 | 118 | 35 | 131 |
| 1.25 | 32 | 3860 | 270 | 0.048 | 0.182 | 8 | 32 | 10 | 36 | 14 | 55 | 19 | 73 | 22 | 82 | 24 | 91 |
| 1.00 | 25 | 5000 | 350 | 0.031 | 0.117 | 5 | 21 | 6 | 23 | 9 | 35 | 12 | 47 | 14 | 53 | 16 | 59 |

Based on 90% mechanical efficiency and 100% volumetric efficiency.
For applications within shaded area contact Customer Service.

Specifications subject to change without notice.



GD 65T (TAC) CONTINUOUS DUTY PLUNGER PUMP

STANDARD EQUIPMENT

- Oil level gauge.
- Crankshaft type construction.
- Double-extended crankshaft 2.62" (6.65 mm) dia., 5.0" (12.7 mm) long.
- Keyway (L x W x H) 4.35" x .625" x .36" (11.05 x 1.59 x .91 mm).
- Turbo lubrication.
- Suction and discharge connections on either side.
- Stainless steel clamp connections between plungers and push rods.
- Removable stuffing boxes with threaded glands.
- Cradle cover.
- Colmonoy, ceramic, or tungsten carbide plungers.
- Disc style aluminum bronze, stainless steel, or monel valves.
- Wing-guided aluminum bronze, steel, or stainless steel valves.
- Non-adjustable packing standard. Kevlar or double stack packing optional.

ACCESSORIES

- Mechanical lubricator for stuffing box packing.
- Suction stabilizers.
- Discharge pulsation dampeners.
- Discharge pressure relief valve.
- Fabricated steel skid under pump and drive.
- V-belt drive assembly.
- Totally enclosed metal belt guard (OSHA approved).
- Valve seat puller.
- Valve seat driver.
- Valve cage wrench.
- Companion flanges.

| | <u>Suction Manifold</u> | <u>Discharge Manifold</u> |
|------|-------------------------|---------------------------|
| TACA | 3" 150# ANSI | 2" 900# ANSI |
| TACE | 3" 1500# | 2" 1500# |
| TACC | 3" 1500# | 2" 1500# |
| TACB | 3" 150# ANSI | 1 1/2" 7500# ANSI |

Note: All installations must contain a pressure relief valve in the discharge line near the pump to help prevent breakage.

MATERIAL SPECIFICATIONS

| SERVICE | TYPE | CYLINDER | PACKING | STUFFING BOX | COMPONENT | MATERIAL |
|---------|-----------------|-----------------|-----------------|-----------------|-------------------|--|
| TACA | Low Pressure | ASTM B-148-9D | Buna-N Non- | ASTM B-148-9D | Crankshaft | Cast Nodular Iron |
| | | Aluminum Bronze | Adjustable Type | Aluminum Bronze | Connecting Rods | Cast Nodular Iron |
| TACE | Low Pressure | AISI 1035 | Buna-N Non- | AISI 1035 | Crossheads | Cast Nodular Iron |
| | | Carbon Steel | Adjustable Type | Carbon Steel | Frame | Cast Iron |
| TACC | Medium Pressure | AISI 1035 | Buna-N Non- | AISI 1035 | Bearing-Main | Tapered Roller Steel Lined with Tin & Babbit |
| | | Carbon Steel | Adjustable Type | Carbon Steel | Bearing-Crankpin | |
| TACB | High Pressure | ASTM B-148-9D | Buna-N Non- | ASTM B-148-9D | Bushing-Crosshead | Bronze |
| | | Aluminum Bronze | Adjustable Type | Aluminum Bronze | | |

*Materials listed are furnished as standard equipment. Alternate materials available upon request.

**Gardner
Denver**

1800 Gardner Expressway
Quincy, ILLinois 62301
(800)682-9868 Fax:(217)224-7814



119 Nolan Road
Broussard, LA 70518
(337)837-2701 Fax:(337)837-3250
www.candbsales.com sales@candbsales.com

