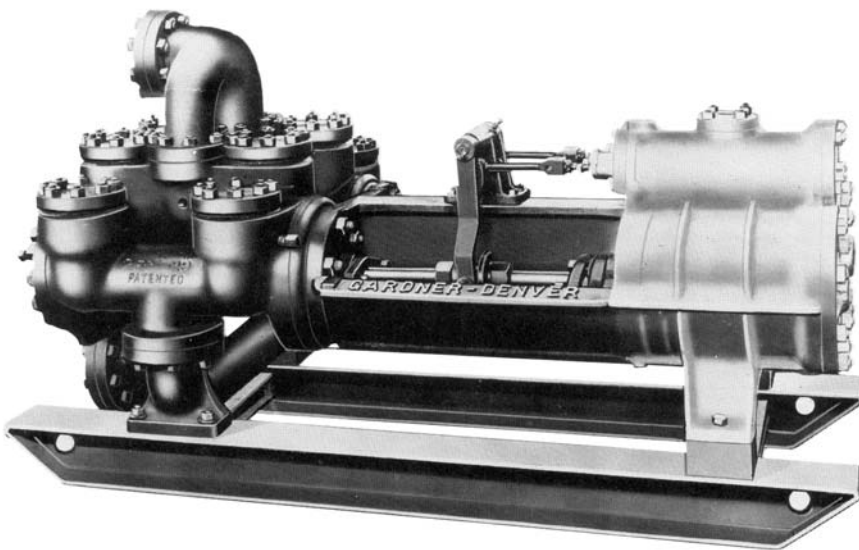




DFS (FC-FS) HIGH PRESSURE DUPLEX STEAM PUMP Air • Steam • Gas Driven



SPECIFICATIONS:

No. of Pistons: 2
Stroke Length: 10"
Pump Weight: 3,100 lbs.
(1,406 kg)

Fluid Cylinder Connections
Suction: 4"
Discharge: 3"

VALVE POT TYPE DUPLEX STEAM PUMPS

With Piston Type Steam Valves – Divided Type Fluid End

(Special Slide Valve Steam End for 250 lbs. maximum pressure available for 10 inch stroke steam pumps.)

DFS (FC-FS) SIZES AND RATINGS																			
SIZE					Steam End Suitable for Max Pressure	Max Steam Pressure for Max Fluid Pressure		Fluid End Suitable for Maximum Pressure		Max Fluid Pressure with Max Steam Pressure		*DISPLACEMENT							
Diameter of Steam Cylinders		Diameter of Fluid Cylinders		Length of Stroke		lbs/ in2	kg/ cm2	lbs/ in2	kg/ cm2	lbs/ in2	kg/ cm2	Gal. per Rev.	Liters per Rev.	30 RPM		60 RPM			
in	mm	in	mm	in	mm									Gal. per Min.	Liters per Min.	Gal. per Min.	Liters per Min.		
10	254	5	127	10	254	400	28.1	400	28.1	Test Pressure 7000 psi	492	1120	78.7	3.247	12.29	97.4	369	195	738
		4.5	114					400	28.1			1380	97.0	2.601	9.84	78.0	295	156	591
		4	102					400	28.1			1740	122.3	2.023	7.66	60.7	230	121	458
		3.5	89					400	28.1			2285	160.6	1.513	5.73	45.4	172	90.8	344
		3	76					400	28.1			3120	219.3	1.071	4.05	32.1	122	64.3	243
		2.5**	64					400	28.1			3580	251.7	.697	2.64	20.9	79	41.8	158

Cylinder liners and pistons interchangeable in sizes listed in each group.

* Theoretical displacement with rods deducted (no slippage considered).

Stalling pressures are approximately 50% in excess of maximum fluid pressures.

** Available for standard fitted, oil fitted, or brass fitted only (not mud, slush or grout fitted).

Specifications subject to change without notice.



DFS (FC-FS) High Pressure Duplex Steam Pump Air • Steam • Gas Driven

STANDARD EQUIPMENT

- Rods and pistons.
- Liners and valves.
- Wood skids.
- All necessary drain cocks and plugs.

OPTIONAL EQUIPMENT

- Lubricator
- Fluid liner pullers
- Valve seat pullers
- Surge chamber
- Steel skid
- Stainless steel valves

*MODEL DESIGNATIONS	
MODEL	FC-FS
Mud Service Fitted*	DFSC
Grout & Cement Service*	DFSF
Oil Service	DFSJ
General Service	DFST
Bronze Fitted (Water Svc)	DFSM
Stroke	10"
Liner Size	
Maximum	5"
Minimum	2.5"
Fluid End Type	Cast Steel Two Piece

*Minimum liner size 3"

MATERIAL SPECIFICATIONS

COMPONENT	STANDARD FITTED	MUD, GROUT & CEMENT FITTED	OIL SERVICE FITTED	BOILER FEED or WATER SERVICE
Cylinder	Cast Steel	Cast Steel	Cast Steel	Cast Steel
Liners	Hardened Steel	Hardened Steel	Hardened Steel	Bronze
Suction Manifold	Cast Iron	Cast Iron	Cast Iron	Cast Iron
Discharge Manifold	Nodular Iron	Nodular Iron	Nodular Iron	Nodular Iron
Packing	Braided Polymer	Molded Convex	Braided Polymer	Braided Polymer
Piston	Iron Follower Type	Steel Insert Type	Iron Solid Type	Bronze Follower Type
Piston Rod	Hardened Steel	Hardened Steel	Hardened Steel	Bronze
Stuffing Box	Nodular Iron	Nodular Iron	Nodular Iron	Nodular Iron
Valve	Steel Wing Guided	Steel Wing Guided	Steel Wing Guided	Bronze Wing Guided
Valve Seats	Steel	Steel	Steel	Bronze

STEAM END	
COMPONENT	MATERIAL
Cylinder	Cast Iron
Piston	Cast Iron
Packing	Braided Polymer
CONNECTIONS	
Inlet	2"
Exhaust	2 ½"

*Materials listed are furnished as standard equipment. Alternate materials available upon request.

**Gardner
Denver**

1800 Gardner Expressway
Quincy, ILLinois 62301
(800)682-9868 Fax:(217)224-7814



119 Nolan Road
Broussard, LA 70518
(337)837-2701 Fax:(337)837-3250
www.candbsales.com sales@candbsales.com