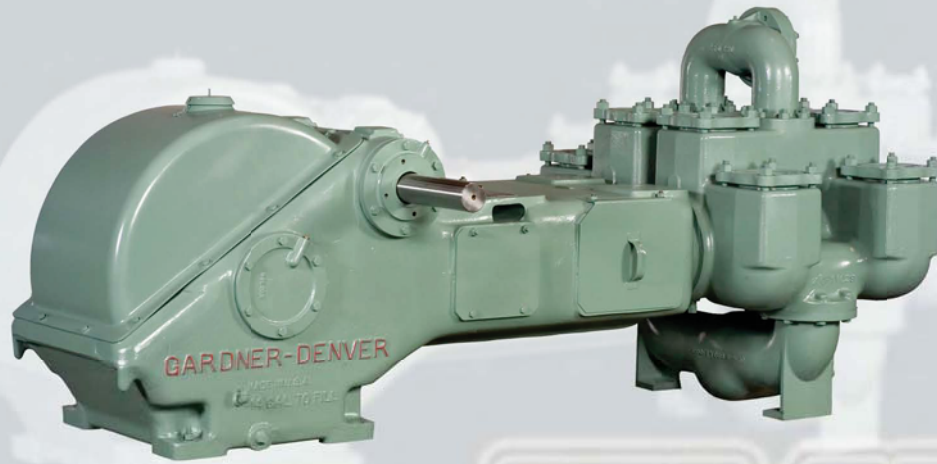


FXD (FC-FXD) Duplex Power Pump – Two-Piece Fluid End



Specifications

| | | |
|---------------------------|-------------------------|---------------------------------|
| Maximum BHP | Mud Service: 83 (62 kw) | Industrial Service: 109 (81 kw) |
| Max. Jackshaft RPM | Mud Service: 390 | Industrial Service: 510 |
| No. of Pistons | 2 | |
| Stroke Length | 10" (203 mm) | |
| Piston Rod Load | 11,270 lbs. (5,112 kg) | |
| Oil Capacity | 14 gallons (53 liters) | |
| Pump Weight | 6,235 lbs. (2,828 kg) | |



FXD (FC-FXD) Duplex Power Pump Performance Ratings

| Linear Size Diameter | | Normal Operation | | | | | **Maximum Recommended Operation | | | | | | |
|---|-------|------------------|-----|--------------|---------------|------------------------|---------------------------------|------|--------------|---------------|-----------------------------|-----------------------------|--------------------|
| | | Displacement | | Max Pump RPM | Jackshaft RPM | Input HP at Max. Speed | Displacement | | Max Pump RPM | Jackshaft RPM | Input HP at Max. Speed | ***Maximum Working Pressure | |
| in. | mm. | gpm | lpm | | | | gpm | lpm | | | | psi | kg/cm ² |
| FXD Duplex Industrial Pump for Oil Line, Mining and Industrial Service | | | | | | | | | | | | | |
| 5 | 127.0 | 185 | 700 | 57 | 342 | 72.8 | 276 | 1045 | 85 | 510 | 109 | 574 | 40 |
| 4.5 | 114.3 | 148 | 560 | 57 | 342 | 72.8 | 221 | 836 | 85 | 510 | 109 | 709 | 49 |
| 4 | 101.6 | 115 | 435 | 57 | 342 | 72.8 | 172 | 651 | 85 | 510 | 109 | 897 | 62 |
| 3.5 | 88.9 | 86 | 326 | 57 | 342 | 72.8 | 129 | 488 | 85 | 510 | 109 | 1171 | 81 |
| 3 | 76.2 | 61 | 231 | 57 | 342 | 72.8 | 91 | 344 | 85 | 510 | 109 | 1500 | 103 |
| Normal/Maximum Recommended Operation | | | | | | | | | | | | | |
| Linear Size Diameter | | Displacement | | Max Pump RPM | Jackshaft RPM | Input HP at Max. Speed | | | | | ***Maximum Working Pressure | | |
| in. | mm. | gpm | lpm | | | | | | | | psi | kg/cm ² | |
| FXD Duplex Mud Pump for Mud, Grout and Cement Service | | | | | | | | | | | | | |
| 5 | 127.0 | 211 | 799 | 65 | | | | | | 390 | 83 | 574 | 40 |
| 4.5 | 114.3 | 169 | 640 | 65 | | | | | | 390 | 83 | 709 | 49 |
| 4 | 101.6 | 131 | 496 | 65 | | | | | | 390 | 83 | 897 | 62 |
| 3.5 | 88.9 | 98 | 371 | 65 | | | | | | 390 | 83 | 1171 | 81 |
| 3 | 76.2 | 70 | 265 | 65 | | | | | | 390 | 83 | 1500 | 103 |

** These speeds are recommended for favorable suction conditions and consideration must be given to viscosity and character of fluids.

*** Maximum working pressure shown applied to the fluid ends. Power ends are designed for certain maximum piston rod loads, and in service the power end determines the maximum pressure on a given size piston. Tabulated maximum pressure for any given size piston for maximum piston rod load must not be exceeded even at reduced RPM. Fluid cylinder liners and pistons are interchangeable in all sizes except for the FXF cylinders fitted with 4.5" parts and FXX and FXD cylinders with 5.5" parts.

FXD (FC-FXD) Duplex Power Pump – Two-Piece Fluid End



Standard Features

- Rods and pistons
- Liners and valves
- Double-extended jackshaft with extension for one side
- Piston rods have Gardner Denver No. 1 or API No. 1 taper (optional)
- Wood skid

Suction Connection: 4" NPT 250#

Discharge Connection: 3" NPT 2500#

Jackshaft Extension

Diameter: 3.25"

Length: 12.38"

Keyway: 12.38"L x 3/4"W x 3/4"H

Dimensions: Length 107.1", Width 59.4", Height 42.5"

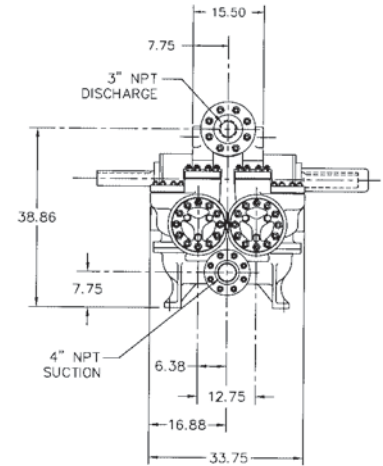
Note: All installations must contain a pressure relief valve in the discharge line near the pump to help prevent breakage.

Optional Equipment

- Surge chamber
- Metal packed pistons
- Steel skid
- Special jackshafts
- Stainless steel valves
- Top motor mount

Model Designations

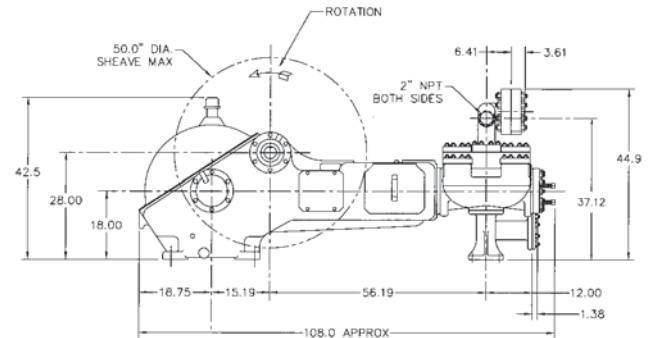
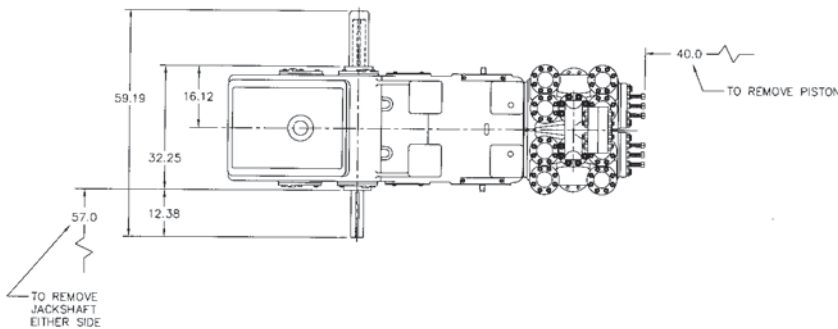
| | |
|---------------------------|-------------------|
| Model | FC-FXD |
| Mud Service | FXDD |
| Grout/Cement Service | FXDH |
| Oil Service | FXDM |
| General Service | FXDU |
| Bronze Fitted (Water Srv) | FXDQ |
| Stroke | 6" |
| Liner Size Maximum | 5" |
| Liner Size Minimum | 2.5" |
| Fluid End Type | Cast Iron 2 Piece |



Material Specifications

| Component | General Service | Mud Grout and Cement | Oil Service | Water Service | Power End Component | Power End Material |
|--------------------|------------------------|--------------------------------|------------------------|--------------------------|------------------------|--------------------|
| Cylinder | Cast steel | Cast steel | Cast steel | Cast steel | Eccentric | Nodular iron |
| Liners | Hardened steel | Hardened steel | Hardened steel | Bronze | Connecting rods | Nodular iron |
| Suction manifold | Cast iron | Cast iron | Cast iron | Cast iron | Crossheads | Cast iron |
| Discharge manifold | Nodular iron | Nodular iron | Nodular iron | Nodular iron | Main bearing | Tapered roller |
| Packing | Braided polymer | Molded convex | Braided polymer | Braided polymer | Connecting rod bearing | Bronze |
| Piston | Iron with pacing rings | Steel body with nitrile rubber | Iron with pacing rings | Bronze with pacing rings | Crosshead pin bearing | Bronze |
| Piston rod | Hardened steel | Hardened steel | Hardened steel | Bronze | | |
| Stuffing box | Nodular iron | Nodular iron | Nodular iron | Nodular iron | | |
| Valve | Iron wing guided | Steel wing guided | Steel wing guided | Bronze wing guided | | |
| Valve seats | Iron | Steel | Steel | Bronze | | |

Materials listed are furnished as standard equipment. Alternate materials are available up/on request.



Drilling & Production Pumps
Gardner Denver Pump Division
1800 Gardner Expressway
Quincy, IL 62301
Phone: 217-224-8800
Fax: 217-224-7814

Drilling & Production After-Market
Gardner Denver Pump Division
2200 South Prospect
Oklahoma City, OK 73129
Phone: 405-677-5736
Fax: 405-677-5807

Well Service Pumps
Gardner Denver Pump Division
4747 South 83rd East Avenue
Tulsa, OK 74145
Phone: 918-828-7800
Fax: 918-447-6487

119 Nolan Road (337) 837-2701
Broussard, LA 70518 Fax: (337) 837-3250

sales@candbsales.com

www.candbsales.com

< www.gardnerdenver.com >