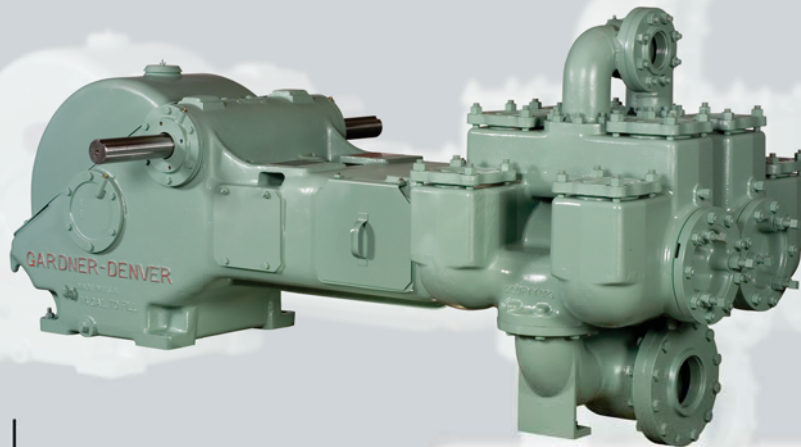


# FXE (FD-FXE) Duplex Power Pump



- Specifications**
- Maximum BHP**
  - Max. Jackshaft RPM**
  - No. of Pistons**
  - Stroke Length**
  - Piston Rod Load**
  - Oil Capacity**
  - Pump Weight**

Mud Service: 102 (76 kw) Industrial Service: 131 (98 kw)  
 Mud Service: 390 Industrial Service: 510  
 2  
 10" (254 mm)  
 11,340 lbs. (6,110 kg)  
 14 gallons (53 liters)  
 6,025 lbs. (2,733 kg)



## FXE (FD-FXE) Duplex Power Pump Performance Ratings

Linear Size Diameter		Normal Operation					**Maximum Recommended Operation					***Maximum Working Pressure	
		Displacement		Max Pump RPM	Jackshaft RPM	Input HP at Max. Speed	Displacement		Max Pump RPM	Jackshaft RPM	Input HP at Max. Speed		
in.	mm.	gpm	lpm				gpm	lpm				psi	kg/cm <sup>2</sup>
<b>FXE Duplex Industrial Pump for Oil Line, Mining and Industrial Service</b>													
5.5	139.7	257	855	57	342	87.9	337	1276	85	510	131	567	39
5	127.0	211	700	57	342	87.9	276	1045	85	510	131	686	47
4.5	114.3	169	560	57	342	87.9	221	836	85	510	131	847	58
4	101.6	132	435	57	342	87.9	172	651	85	510	131	1072	74
3.5	88.9	98	326	57	342	87.9	129	488	85	510	131	1401	97
3	76.2	70	231	57	342	87.9	91	344	85	510	131	1500	103
<b>Normal/Maximum Recommended Operation</b>													
Linear Size Diameter		Displacement		Max Pump RPM	Jackshaft RPM	Input HP at Max. Speed					***Maximum Working Pressure		
in.	mm.	gpm	lpm								psi	kg/cm <sup>2</sup>	
<b>FXE Duplex Mud Pump for Mud, Grout and Cement Service</b>													
5.5	139.7	257	855	65						390	102	567	39
5	127.0	211	700	65						390	102	686	47
4.5	114.3	169	560	65						390	102	847	58
4	101.6	132	435	65						390	102	1072	74
3.5	88.9	98	326	65						390	102	1401	97
3	76.2	70	231	65						390	102	1500	103

\*\* These speeds are recommended for favorable suction conditions and consideration must be given to viscosity and character of fluids.  
 \*\*\* Maximum working pressure shown applied to the fluid ends. Power ends are designed for certain maximum piston rod loads, and in service the power end determines the maximum pressure on a given size piston. Tabulated maximum pressure for any given size piston for maximum piston rod load must not be exceeded even at reduced RPM. Fluid cylinder liners and pistons are interchangeable in all sizes except for the FXF cylinders fitted with 4.5" parts and FXX and FXD cylinders with 5.5" parts.

# FXE (FD-FXE) Duplex Power Pump



## Standard Features

- Rods and pistons
- Liners and valves
- Double-extended jackshaft with extension for one side
- Piston rods have Gardner Denver No. 1 or API No. 1 taper (optional)
- Wood skid

**Suction Connection:** 4" NPT 250#

**Discharge Connection:** 3" NPT 600#

### Jackshaft Extension

Diameter: 3.25"

Length: 12.38"

**Keyway:** 12.38" L x 3/4" W x 3/4" H

**Dimensions:** Length 107.1", Width 59.4", Height 42.5"

**Note:** All installations must contain a pressure relief valve in the discharge line near the pump to help prevent breakage.

## Optional Equipment

- Surge chamber
- Steel skid
- Stainless steel valves
- Metal packed pistons
- Special jackshafts
- Top motor mount

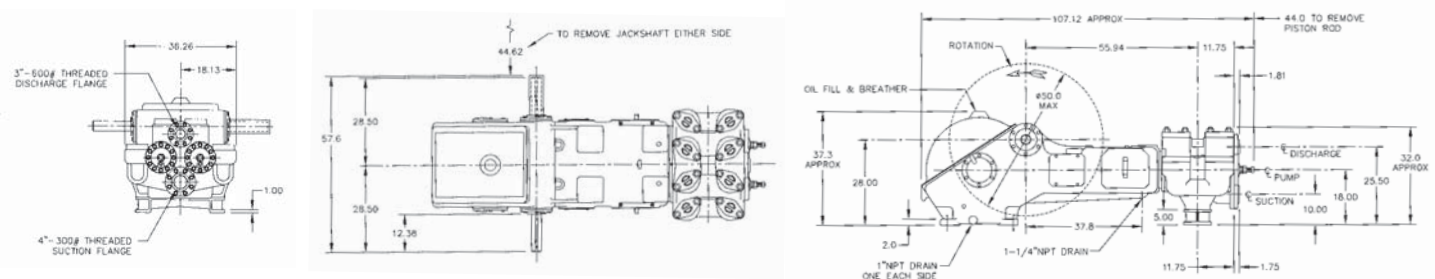
## Model Designations

Model	FD-FXE	FD-FXE
Mud Service	FXEC	FXEB
Grout/Cement Service	FXEG	FXEF
Oil Service	FXEL	FXEK
General Service	FXET	FXES
Bronze Fitted (Water Srv)	FXEP	N/A
Stroke	10"	10"
Liner Size Maximum	5"	5.5"
Liner Size Minimum	3"	3.5"
Fluid End Type	Cast Iron 1 Piece	Cast Iron 1 Piece

## Material Specifications

Component	General Service	Mud Grout and Cement	Oil Service	Water Service	Power End Component	Power End Material
Cylinder	Cast iron	Cast iron	Cast iron	Cast iron	Eccentric	Nodular iron
Liners	Hardened steel	Hardened steel	Hardened steel	Bronze	Eccentric gear	Eccentric steel
Suction manifold	Cast iron	Cast iron	Cast iron	Cast iron	Connecting rods	Hardened steel
Discharge manifold	Cast iron	Cast iron	Cast iron	Cast iron	Crossheads	Cast iron
Packing	Braided polymer	Molded convex	Braided polymer	Braided polymer	Main bearing	Tapered roller
Piston	Iron with pacing rings	Steel body with nitrile rubber	Iron with pacing rings	Bronze with pacing rings	Connecting rod bearing	Bronze
Piston rod	Hardened steel	Hardened steel	Hardened steel	Bronze	Crosshead pin bearing	Bronze
Stuffing box	Cast iron	Cast iron	Cast iron	Cast iron		
Valve	Iron wing guided	Steel wing guided	Steel wing guided	Bronze wing guided		
Valve seats	Iron	Steel	Steel	Bronze		

Materials listed are furnished as standard equipment. Alternate materials are available up/on request.



# Gardner Denver

Drilling & Production Pumps  
Gardner Denver Pump Division  
1800 Gardner Expressway  
Quincy, IL 62301  
Phone: 217-224-8800  
Fax: 217-224-7814

Drilling & Production After-Market  
Gardner Denver Pump Division  
2200 South Prospect  
Oklahoma City, OK 73129  
Phone: 405-677-5736  
Fax: 405-677-5807

Well Service Pumps  
Gardner Denver Pump Division  
4747 South 83rd East Avenue  
Tulsa, OK 74145  
Phone: 918-828-7800  
Fax: 918-447-6487



119 Nolan Road (337) 837-2701  
Broussard, LA 70518 Fax: (337) 837-3250

sales@candbsales.com

www.candbsales.com

< [www.gardnerdenver.com](http://www.gardnerdenver.com) >