

# FXX (FD-FXX) Duplex Power Pump



**Specifications**  
**Maximum BHP**  
**Max. Jackshaft RPM**  
**No. of Pistons**  
**Stroke Length**  
**Piston Rod Load**  
**Oil Capacity**  
**Pump Weight**

Mud Service: 52 (39 kw)    Industrial Service: 73 (54 kw)  
 Mud Service: 330            Industrial Service: 471  
 2  
 8" (203 mm)  
 8,036 lbs. (3,645 kg)  
 12 gallons (46 liters)  
 4,760 lbs. (2,159 kg)

## FXX (FD-FXX) Duplex Power Pump Performance Ratings

Linear Size Diameter		Normal Operation					**Maximum Recommended Operation					***Maximum Working Pressure	
		Displacement		Max Pump RPM	Jackshaft RPM	Input HP at Max. Speed	Displacement		Max Pump RPM	Jackshaft RPM	Input HP at Max. Speed		
in.	mm.	gpm	lpm				gpm	lpm				psi	kg/cm <sup>2</sup>
<b>FXX Duplex Industrial Pump for Oil Line, Mining and Industrial Service</b>													
5.5	139.7	200	757	63	297	46	317	1200	100	471	73	338	24
5	127.0	164	621	63	297	46	260	984	100	471	73	409	29
4.5	114.3	131	496	63	297	46	208	787	100	471	73	505	36
4	101.6	102	386	63	297	46	162	613	100	471	73	640	45
3.5	88.9	76	288	63	297	46	121	458	100	471	73	836	59
3	76.2	54	204	63	297	46	86	326	100	471	73	1136	80
<b>Normal/Maximum Recommended Operation</b>													
Linear Size Diameter		Displacement		Max Pump RPM	Jackshaft RPM	Input HP at Max. Speed					***Maximum Working Pressure		
in.	mm.	gpm	lpm									psi	kg/cm <sup>2</sup>
<b>FXX Duplex Mud Pump for Mud, Grout and Cement Service</b>													
5.5	139.7	222	840	70	330	52						338	24
5	127.0	182	689	70	330	52						409	29
4.5	114.3	146	553	70	330	52						505	36
4	101.6	113	439	70	330	52						640	45
3.5	88.9	85	322	70	330	52						836	59
3	76.2	60	227	70	330	52						1136	80

\*\* These speeds are recommended for favorable suction conditions and consideration must be given to viscosity and character of fluids.

\*\*\* Maximum working pressure shown applied to the fluid ends. Power ends are designed for certain maximum piston rod loads, and in service the power end determines the maximum pressure on a given size piston. Tabulated maximum pressure for any given size piston for maximum piston rod load must not be exceeded even at reduced RPM. Fluid cylinder liners and pistons are interchangeable in all sizes except for the FXF cylinders fitted with 4.5" parts and FXX and FXD cylinders with 5.5" parts.

# FXX (FD-FXX) Duplex Power Pump



## Standard Features

- Rods and pistons
- Liners and valves
- Double-extended jackshaft with extension for one side
- Piston rods have Gardner Denver No. 1 or API No. 1 taper (optional)
- Wood skid

**Suction Connection:** 4" NPT 250#

**Discharge Connection:** 3" NPT 600#

### Jackshaft Extension

Diameter: 3"

Length: 9"

**Keyway:** 9"L x 3/4"W x 3/4"H

**Dimensions:** Length 96.9", Width 49.8", Height 31.0"

**Note:** All installations must contain a pressure relief valve in the discharge line near the pump to help prevent breakage.

## Optional Equipment

- Surge chamber
- Steel skid
- Stainless steel valves
- Metal packed pistons
- Special jackshafts
- Top motor mount

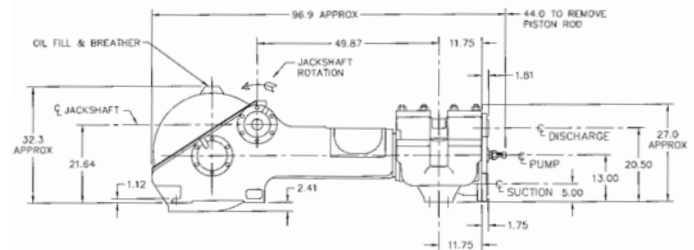
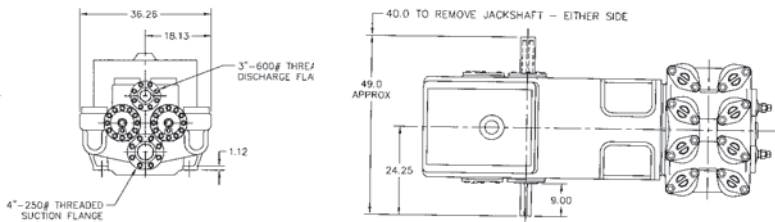
## Model Designations

Model	FD-FXX	FD-FXX
Mud Service	FXXC	FXXB
Grout/Cement Service	FXXG	FXXF
Oil Service	FXXL	FXXK
General Service	FXXT	FXXS
Bronze Fitted (Water Srv)	FXXP	N/A
Stroke	8"	8"
Liner Size Maximum	5"	5.5"
Liner Size Minimum	3"	3.5"
Fluid End Type	Cast Iron 1 Piece	Cast Iron 1 Piece

## Material Specifications

Component	General Service	Mud Grout and Cement	Oil Service	Water Service	Power End Component	Power End Material
Cylinder	Cast iron	Cast iron	Cast iron	Cast iron	Eccentric	Cast iron
Liners	Hardened steel	Hardened steel	Hardened steel	Bronze	Connecting rods	Nodular iron
Suction manifold	Cast iron	Cast iron	Cast iron	Cast iron	Crossheads	Cast iron
Discharge manifold	Cast iron	Cast iron	Cast iron	Cast iron	Main bearing	Tapered roller
Packing	Braided polymer	Molded convex	Braided polymer	Braided polymer	Connecting rod bearing	Bronze
Piston	Iron with pacing rings	Steel body with nitrile rubber	Iron with pacing rings	Bronze with pacing rings	Crosshead pin bearing	Bronze
Piston rod	Hardened steel	Hardened steel	Hardened steel	Bronze		
Stuffing box	Cast iron	Cast iron	Cast iron	Cast iron		
Valve	Iron wing guided	Steel wing guided	Steel wing guided	Bronze wing guided		
Valve seats	Iron	Steel	Steel	Bronze		

Materials listed are furnished as standard equipment. Alternate materials are available upon request.



Drilling & Production Pumps  
Gardner Denver Pump Division  
1800 Gardner Expressway  
Quincy, IL 62301  
Phone: 217-224-8800  
Fax: 217-224-7814

Drilling & Production After-Market  
Gardner Denver Pump Division  
2200 South Prospect  
Oklahoma City, OK 73129  
Phone: 405-677-5736  
Fax: 405-677-5807

Well Service Pumps  
Gardner Denver Pump Division  
4747 South 83rd East Avenue  
Tulsa, OK 74145  
Phone: 918-828-7800  
Fax: 918-447-6487

119 Nolan Road (337) 837-2701  
Broussard, LA 70518 Fax: (337) 837-3250

sales@candbsales.com

www.candbsales.com

< [www.gardnerdenver.com](http://www.gardnerdenver.com) >