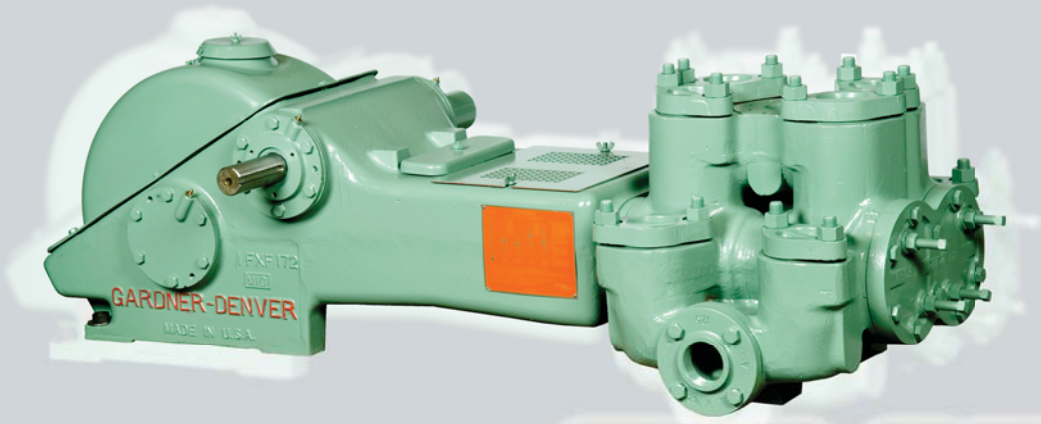


# FXF (FF-FXF) Duplex Power Pump



<b>Specifications</b>	
<b>Maximum BHP</b>	Mud Service: 16.2 (12 kw) Industrial Service: 19.7 (15 kw)
<b>Max. Jackshaft RPM</b>	Mud Service: 439 Industrial Service: 537
<b>No. of Pistons</b>	2
<b>Stroke Length</b>	5" (127 mm)
<b>Piston Rod Load</b>	3,140 lbs. (1,424 kg)
<b>Oil Capacity</b>	3 gallons (11.5 liters)
<b>Pump Weight</b>	1,495 lbs. (678 kg)



## FXF (FF-FXF) Duplex Power Pump Performance Ratings

		Normal Operation					**Maximum Recommended Operation						
Linear Size Diameter		Displacement		Max Pump RPM	Jackshaft RPM	Input HP at Max. Speed	Displacement		Max Pump RPM	Jackshaft RPM	Input HP at Max. Speed	***Maximum Working Pressure	
in.	mm.	gpm	lpm				gpm	lpm				psi	kg/cm <sup>2</sup>
<b>FXF Duplex Industrial Pump for Oil Line, Mining and Industrial Service</b>													
4.5	114.3	121	458	90	439	16.2	149	562	110	537	19.7	197	13
4	101.6	94	357	90	439	16.2	115	435	110	537	19.7	250	17
3.5	88.9	72	274	90	439	16.2	88	334	110	537	19.7	326	22
3	76.2	52	197	90	439	16.2	64	242	110	537	19.7	444	30
2.5	63.5	35	135	90	439	16.2	43	164	110	537	19.7	639	44
<b>Normal/Maximum Recommended Operation</b>													
Linear Size Diameter		Displacement		Max Pump RPM	Jackshaft RPM	Input HP at Max. Speed					***Maximum Working Pressure		
in.	mm.	gpm	lpm								psi	kg/cm <sup>2</sup>	
<b>FXF Duplex Mud Pump for Mud, Grout and Cement Service</b>													
4.5	114.3	121	458	90	439	16.2					197	13	
4	101.6	94	357	90	439	16.2					250	17	
3.5	88.9	72	274	90	439	16.2					326	22	
3	76.2	52	198	90	439	16.2					444	30	
2.5	63.5	35	135	90	439	16.2					639	44	

\*\* These speeds are recommended for favorable suction conditions and consideration must be given to viscosity and character of fluids.  
 \*\*\* Maximum working pressure shown applied to the fluid ends. Power ends are designed for certain maximum piston rod loads, and in service the power end determines the maximum pressure on a given size piston. Tabulated maximum pressure for any given size piston for maximum piston rod load must not be exceeded even at reduced RPM. Fluid cylinder liners and pistons are interchangeable in all sizes except for the FXF cylinders fitted with 4.5" parts and FXX and FXD cylinders with 5.5" parts.

# FXF (FF-FXF) Duplex Power Pump



## Standard Features

- Rods and pistons
- Liners and valves
- Double-extended jackshaft with extension for one side
- Piston rods have Gardner Denver No. 1 or API No. 1 taper (optional)
- Wood skid

**Suction Connection:** 2 1/2" NPT 125#

**Discharge Connection:** 2" NPT 300#

### Jackshaft Extension

Diameter: 1.94"

Length: 5.0"

**Keyway:** 4 7/8" L x 1/2" W x 1/2" H

**Dimensions:** Length 67.4", Width 30.1", Height 13.5"

**Note:** All installations must contain a pressure relief valve in the discharge line near the pump to help prevent breakage.

## Optional Equipment

- Surge chamber
- Steel skid
- Stainless steel valves
- Metal packed pistons
- Special jackshafts
- Top motor mount

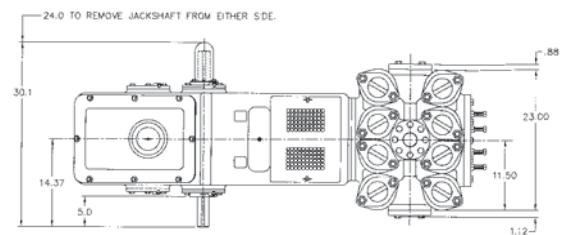
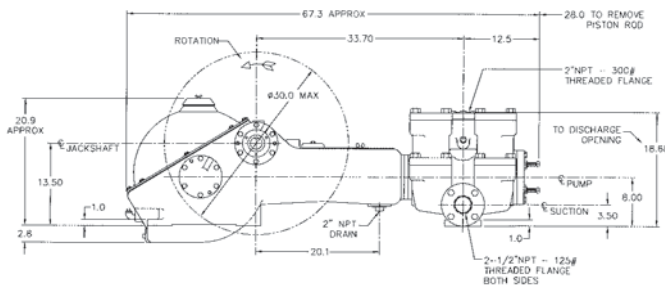
## Model Designations

Model	FF-FXF	FF-FXF
Mud Service	FXFB	FXFA
Grout/Cement Service	FXFD	FXFC
Oil Service	FXFE	FXFJ
General Service	FXFG	FXFH
Bronze Fitted (Water Srv)	FXFF	N/A
Stroke	5"	5"
Liner Size Maximum	4"	4.5"
Liner Size Minimum	2.5"	4"
Fluid End Type	Cast Iron 1 Piece	Cast Iron 1 Piece

## Material Specifications

Component	General Service	Mud Grout and Cement	Oil Service	Water Service	Power End Component	Power End Material
Cylinder	Cast iron	Cast iron	Cast iron	Cast iron	Eccentric	Cast iron
Liners	Hardened steel	Hardened steel	Hardened steel	Bronze	Connecting rods	Cast iron
Suction manifold	Cast iron	Cast iron	Cast iron	Cast iron	Crossheads	Cast iron
Discharge manifold	Integral with cylinder	Integral with cylinder	Integral with cylinder	Integral with cylinder	Main bearing	Tapered roller
Packing	Braided polymer	Molded convex	Braided polymer	Braided polymer	Connecting rod bearing	Bronze
Piston	Iron with pacing rings	Steel body with nitrile rubber	Iron with pacing rings	Bronze with pacing rings	Crosshead pin bearing	Bronze
Piston rod	Hardened steel	Hardened steel	Hardened steel	Bronze		
Stuffing box	Cast iron	Cast iron	Cast iron	Cast iron		
Valve	Iron wing guided	Steel wing guided	Steel wing guided	Bronze wing guided		
Valve seats	Iron	Steel	Steel	Bronze		

Materials listed are furnished as standard equipment. Alternate materials are available up/on request.



Drilling & Production Pumps  
Gardner Denver Pump Division  
1800 Gardner Expressway  
Quincy, IL 62301  
Phone: 217-224-8800  
Fax: 217-224-7814

Drilling & Production After-Market  
Gardner Denver Pump Division  
2200 South Prospect  
Oklahoma City, OK 73129  
Phone: 405-677-5736  
Fax: 405-677-5807

Well Service Pumps  
Gardner Denver Pump Division  
4747 South 83rd East Avenue  
Tulsa, OK 74145  
Phone: 918-828-7800  
Fax: 918-447-6487



119 Nolan Road (337) 837-2701  
Broussard, LA 70518 Fax: (337) 837-3250

sales@candbsales.com

www.candbsales.com

< [www.gardnerdenver.com](http://www.gardnerdenver.com) >