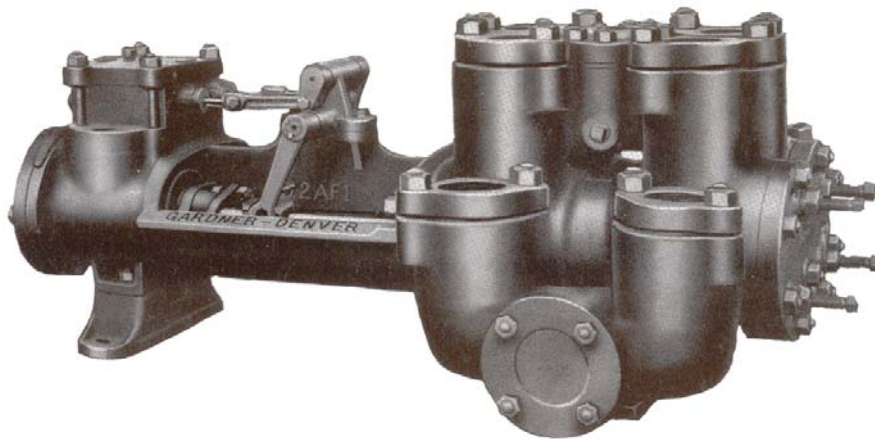




## DAG (FG-AG) HIGH PRESSURE DUPLEX STEAM PUMP Air • Steam • Gas Driven



### SPECIFICATIONS:

**No. of Pistons: 2**  
**Stroke Length: 6"**  
**Pump Weight: 1,445 lbs.**  
**(655 kg)**

**Fluid Cylinder Connections**  
**Suction: 4"**  
**Discharge: 2"**

### VALVE POT TYPE DUPLEX STEAM PUMPS

With Plain Slide Steam Valves – One-Piece Alloy Cast Iron Fluid End

DAG (FG-AG) SIZES AND RATINGS																			
*SIZE					Steam End Suitable for Max Pressure		Max Steam Pressure for Max Fluid Pressure		Fluid End Suitable for Maximum Pressure		Max Fluid Pressure with Max Steam Pressure		**DISPLACEMENT						
Diameter of Steam Cylinders		Diameter of Fluid Cylinders		Length of Stroke		lbs/ in2	kg/ cm2	lbs/ in2	kg/ cm2	lbs/ in2	kg/ cm2	lbs/ in2	kg/ cm2	Gal. per Rev.	Liters per Rev.	45 RPM		90 RPM	
in	mm	in	mm	in	mm											Gal. per Min.	Liters per Min.	Gal. per Min.	Liters per Min.
6	152	5	127	6	152	250	17.6	250	17.6	Test Pressure 1800 psi	126.5	250	17.6	2.000	7.57	90.0	341	180	681
		4.5	114									310	21.8	1.611	6.10	72.5	274	145	549
		4	102									395	27.8	1.265	4.79	56.9	215	114	432
		3.5	89									515	36.2	.958	3.63	43.1	163	86.2	326
		3	76									700	49.2	.693	2.63	31.2	118	62.4	236
		2.5	64									900	63.3	.469	1.78	21.1	80	42.2	160

\*Cylinder liners and pistons interchangeable in sizes listed in each group.

\*\* Theoretical displacement with rods deducted (no slippage considered).

Stalling pressures are approximately 50% in excess of maximum fluid pressures.

Specifications subject to change without notice.



**DAG (FG-AG) High Pressure  
Duplex Steam Pump  
Air • Steam • Gas Driven**

**STANDARD EQUIPMENT**

- Rods and pistons.
- Liners and valves.
- Wood skids.
- All necessary drain cocks and plugs.

**OPTIONAL EQUIPMENT**

- Lubricator
- Fluid liner pullers
- Valve seat pullers
- Surge chamber
- Steel skid
- Stainless steel valves

**MODEL DESIGNATIONS**

MODEL	FG-AG
Mud Service Fitted	DAGA
Grout & Cement Service	DAGB
Oil Service	DAGC
General Service	DAGG
Bronze Fitted (Water Svc)	DAGE
Stroke	6"
Liner Size	
Maximum	5"
Minimum	2.5"
Fluid End Type	Cast Iron One Piece

**MATERIAL SPECIFICATIONS**

COMPONENT	STANDARD FITTED	MUD, GROUT & CEMENT FITTED	OIL SERVICE FITTED	BOILER FEED or WATER SERVICE
<b>Cylinder</b>	Cast Iron	Cast Iron	Cast Iron	Cast Iron
<b>Liners</b>	Hardened Steel	Hardened Steel	Hardened Steel	Bronze
<b>Suction Manifold</b>	Integral with Cylinder	Integral with Cylinder	Integral with Cylinder	Integral with Cylinder
<b>Discharge Manifold</b>	Integral with Cylinder	Integral with Cylinder	Integral with Cylinder	Integral with Cylinder
<b>Packing</b>	Braided Polymer	Molded Convex	Braided Polymer	Braided Polymer
<b>Piston</b>	Iron Follower Type	Steel Insert Type	Iron Solid Type	Bronze Follower Type
<b>Piston Rod</b>	Hardened Steel	Hardened Steel	Hardened Steel	Bronze
<b>Stuffing Box</b>	Cast Iron	Cast Iron	Cast Iron	Cast Iron
<b>Valve</b>	Steel Wing Guided	Steel (Gravel) Wing Guided	Steel Wing Guided	Bronze Wing Guided
<b>Valve Seats</b>	Steel	Steel	Steel	Bronze

STEAM END	
COMPONENT	MATERIAL
Cylinder	Cast Iron
Piston	Cast Iron
Packing	Braided Polymer
CONNECTIONS	
Inlet	1"
Exhaust	1 ½"

\*Materials listed are furnished as standard equipment. Alternate materials available upon request.



119 Nolan Road  
Broussard, LA 70518  
(337)837-2701 Fax:(337)837-3250  
www.candbsales.com sales@candbsales.com



1800 Gardner Expressway  
Quincy, Illinois 62301  
(800)682-9868 Fax:(217)224-7814