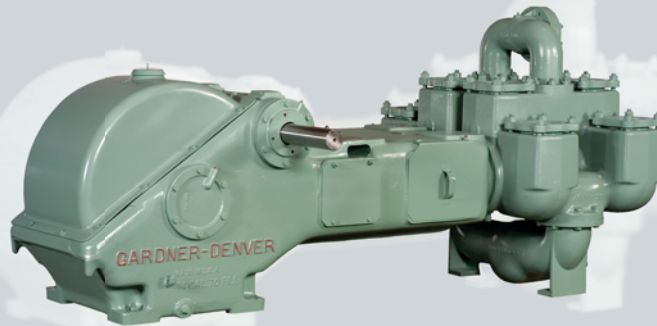


FXD (FY-FXD) Duplex Power Pump – Two-Piece Fluid End



Specifications

Maximum BHP	Mud Service: 85 (63 kw)	Industrial Service: 111 (83 kw)
Max. Jackshaft RPM	Mud Service: 390	Industrial Service: 510
No. of Pistons	2	
Stroke Length	10" (254 mm)	
Piston Rod Load	11,270 lbs. (5,112 kg)	
Oil Capacity	14 gallons (53 liters)	
Pump Weight	8,090 lbs. (3,216 kg)	

FXD (FY-FXD) Duplex Power Pump Performance Ratings

Linear Size Diameter		Normal Operation					**Maximum Recommended Operation					***Maximum Working Pressure	
		Displacement		Max Pump RPM	Jackshaft RPM	Input HP at Max. Speed	Displacement		Max Pump RPM	Jackshaft RPM	Input HP at Max. Speed		
in.	mm.	gpm	lpm				gpm	lpm				psi	kg/cm ²
FXD Duplex Industrial Pump for Oil Line, Mining and Industrial Service													
7.5	191	427	1616	57	342	74.7	637	2411	85	510	111	255	18
7.25	184	398	1506	57	342	74.7	594	2248	85	510	111	273	19
7	178	371	1404	57	342	74.7	553	2093	85	510	111	292	20
6.5	165	319	1207	57	342	74.7	474	1798	85	510	111	339	23
6	152	270	1022	57	342	74.7	403	1525	85	510	111	398	27
5.5	140	226	855	57	342	74.7	337	1276	85	510	111	475	33
5	127	185	700	57	342	74.7	276	1045	85	510	111	574	40
Normal/Maximum Recommended Operation													
Linear Size Diameter		Displacement		Max Pump RPM	Jackshaft RPM	Input HP at Max. Speed	***Maximum Working Pressure						
in.	mm.	gpm	lpm				psi	kg/cm ²					
FXD Duplex Mud Pump for Mud, Grout and Cement Service													
7.5	191	487	1843	65	390	85	255	18					
7.25	184	454	1718	65	390	85	273	19					
7	178	423	1601	65	390	85	292	20					
6.75	172	392	1484	65	390	85	315	22					
6.5	165	364	1378	65	390	85	339	23					
6	152	308	1166	65	390	85	298	27					
5.5	140	257	973	65	390	85	475	33					
5	127	211	799	65	390	85	574	40					

** These speeds are recommended for favorable suction conditions and consideration must be given to viscosity and character of fluids.

*** Maximum working pressure shown applied to the fluid ends. Power ends are designed for certain maximum piston rod loads, and in service the power end determines the maximum pressure on a given size piston. Tabulated maximum pressure for any given size piston for maximum piston rod load must not be exceeded even at reduced RPM. Fluid cylinder liners and pistons are interchangeable in all sizes except for the FXF cylinders fitted with 4.5" parts and FXX and FXD cylinders with 5.5" parts.

FXD (FY-FXD) Duplex Power Pump – Two-Piece Fluid End



Standard Features

- Rods and pistons
- Liners and valves
- Double-extended jackshaft with extension for one side
- Piston rods have Gardner Denver No. 1 or API No. 1 taper (optional)
- Wood skid

Suction Connection: 10" NPT 150#

Discharge Connection: 4" NPT 300#

Jackshaft Extension

Diameter: 3.25"

Length: 12.38"

Keyway: 12.38" L x 3/4" W x 3/4" H

Dimensions: Length 115.6", Width 59.4", Height 42.5"

Note: All installations must contain a pressure relief valve in the discharge line near the pump to help prevent breakage.

Optional Equipment

- Surge chamber
- Steel skid
- Stainless steel valves
- Metal packed pistons
- Special jackshafts
- Top motor mount

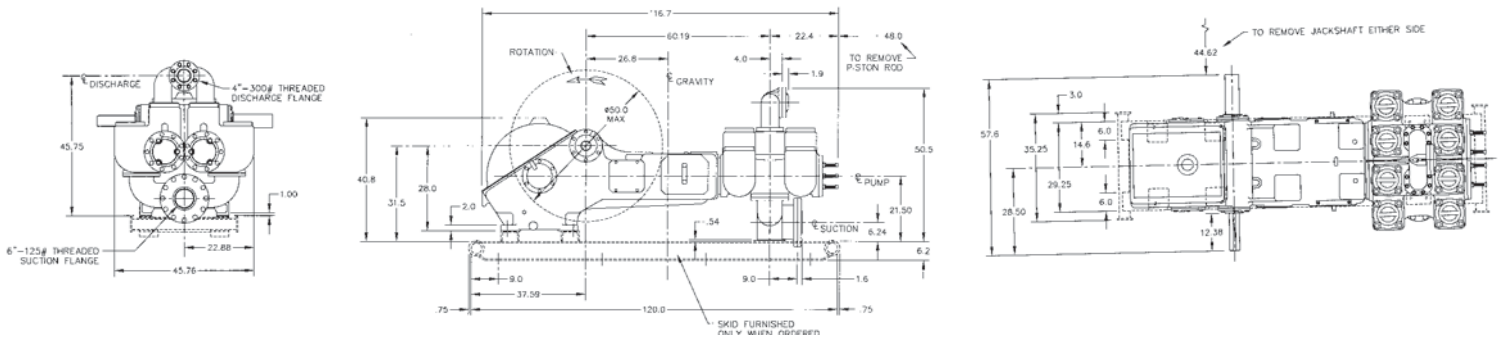
Model Designations

Model	FY-FXD
Mud Service	FXDA
Grout/Cement Service	FXDE
Oil Service	FXDJ
General Service	FXDR
Bronze Fitted (Water Srv)	FXDN
Stroke	10"
Liner Size Maximum	7.5"
Liner Size Minimum	5"
Fluid End Type	Cast Iron 2 Piece

Material Specifications

Component	General Service	Mud Grout and Cement	Oil Service	Water Service	Power End Component	Power End Material
Cylinder	Cast iron	Cast iron	Cast iron	Cast iron	Eccentric	Nodular iron
Liners	Hardened steel	Hardened steel	Hardened steel	Bronze	Connecting rods	Nodular iron
Suction manifold	Cast iron	Cast iron	Cast iron	Cast iron	Crossheads	Cast iron
Discharge manifold	Cast iron	Cast iron	Cast iron	Cast iron	Main bearing	Tapered roller
Packing	Braided polymer	Molded convex	Braided polymer	Braided polymer	Connecting rod bearing	Bronze
Piston	Iron with pacing rings	Steel body with nitrile rubber	Iron with pacing rings	Bronze with pacing rings	Crosshead pin bearing	Bronze
Piston rod	Hardened steel	Hardened steel	Hardened steel	Bronze		
Stuffing box	Cast iron	Cast iron	Cast iron	Cast iron		
Valve	Steel center guided	Steel wing guided	Steel center guided	Bronze wing guided		
Valve seats	Iron	Steel	Steel	Bronze		

Materials listed are furnished as standard equipment. Alternate materials are available upon request.



Drilling & Production Pumps
Gardner Denver Pump Division
1800 Gardner Expressway
Quincy, IL 62301
Phone: 217-224-8800
Fax: 217-224-7814

Drilling & Production After-Market
Gardner Denver Pump Division
2200 South Prospect
Oklahoma City, OK 73129
Phone: 405-677-5736
Fax: 405-677-5807

Well Service Pumps
Gardner Denver Pump Division
4747 South 83rd East Avenue
Tulsa, OK 74145
Phone: 918-828-7800
Fax: 918-447-6487

119 Nolan Road (337) 837-2701
Broussard, LA 70518 Fax: (337) 837-3250

sales@candbsales.com

www.candbsales.com

< www.gardnerdenver.com >