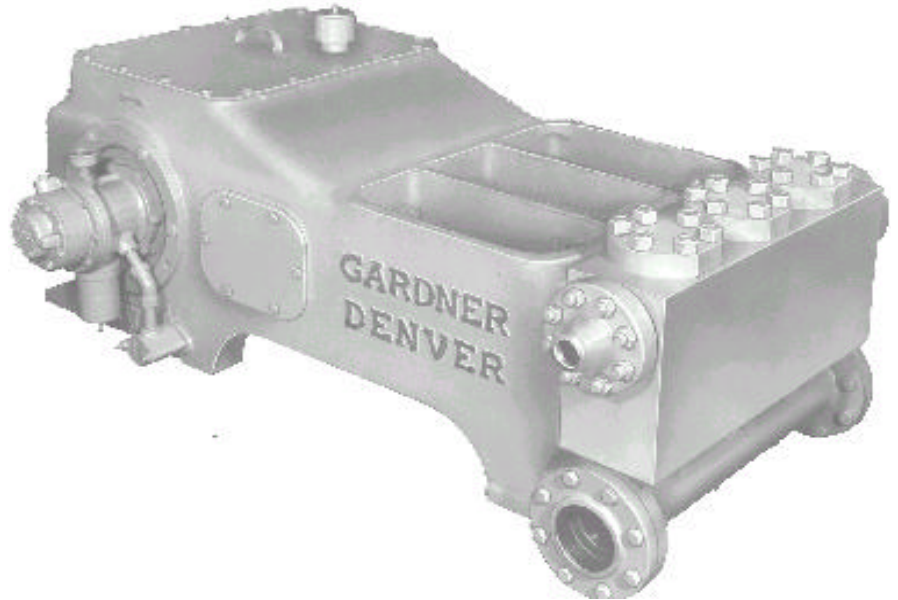




# TEE (GD-125T) CONTINUOUS DUTY PLUNGER PUMP

## SPECIFICATIONS:

- Maximum BHP: 125 (93 kw)
- Maximum RPM: 350
- No. of Plungers: 3
- Stroke Length: 5 in. (127 mm)
- Plunger Load: 8,490 lbs. (3,859 kg)
- Discharge Hydrostatic Test Pressure
  - LP – 3,000 psi (211 kg/cm<sup>2</sup>)
  - MP – 5,000 psi (352 kg/cm<sup>2</sup>)
  - HP – 6,000 psi (1,055 kg/cm<sup>2</sup>)
- Oil Capacity: 12 gal. (45 liters)
- Pump Weight: 3,230 lbs. (1,465 kg)



## PERFORMANCE RATINGS

Plunger Size		Maximum Pressure		Displacement per revolution		Gallons Per Minute/Liters at the following RPM:											
						100		150		200		250		300		350	
in.	mm	PSI	kg/cm <sup>2</sup>	gal.	liters	GPM	LPM	GPM	LPM	GPM	LPM	GPM	LPM	GPM	LPM	GPM	LPM
<b>LP ALUMINUM BRONZE (TEEA) FLUID END</b>																	
4	102	675	47	0.816	3.089	82	309	122	463	163	618	204	772	245	927	286	1081
3.5	89	885	62	0.625	2.366	62	237	94	355	125	473	156	591	188	710	219	828
3.25	83	1020	72	0.539	2.040	54	204	81	306	108	408	135	510	162	612	189	714
3	76	1105	78	0.459	1.737	46	174	69	261	92	347	115	434	138	521	161	608
<b>MP ALUMINUM BRONZE (TEEB) FLUID END</b>																	
3	76	1200	84	0.459	1.737	46	174	69	261	92	347	115	434	138	521	161	608
2.75	70	1430	101	0.386	1.461	39	146	58	219	77	292	97	365	116	438	135	511
2.5	64	1730	122	0.319	1.207	32	121	48	181	64	241	80	302	96	362	112	432
2.25	57	2135	150	0.258	0.977	26	98	39	146	52	195	65	244	77	293	90	342
<b>HP BLOCK STEEL (TEEC) FLUID END</b>																	
2	51	2700	190	0.204	.7721	20	77	31	116	41	154	51	193	61	232	71	270
1.75	44	3535	249	0.156	.5904	16	59	23	89	31	118	39	148	47	177	55	207
1.5	38	4785	336	0.115	.4352	12	44	17	65	23	87	29	109	35	131	40	152
1.25	32	6500	457	0.080	.3028	8	30	12	45	16	618	20	76	24	91	28	106
1	25	6500	457	0.051	.1930	5	19	8	29	10	39	11	48	15	58	18	68

Based on 90% mechanical efficiency and 100% volumetric efficiency.  
For applications within shaded area contact Customer Service.

Specifications subject to change without notice.



## TEE (GD-125T) CONTINUOUS DUTY PLUNGER PUMP

### STANDARD EQUIPMENT

- Oil level gauge.
- Crankshaft type construction.
- Double-extended crankshaft 4.0" (10.16 mm) dia., 8.6" (21.84 mm) long.
- Keyway (L x W x H) 7.34" x 1" x .44" (18.64 x 2.54 x 1.12 mm).
- Pressure lubrication.
- Suction and discharge connections on either side.
- Stainless steel clamp connections between plungers and push rods.
- Removable stuffing boxes with threaded glands.
- Cradle cover.
- Colmonoy, ceramic, or tungsten carbide plungers.
- Disc style aluminum bronze, stainless steel, or monel valves.
- Wing-guided aluminum bronze, steel, or stainless steel valves.
- Non-adjustable packing standard. Kevlar or double stack packing optional.

### ACCESSORIES

- Mechanical lubricator for stuffing box packing.
- Suction stabilizers.
- Discharge pulsation dampeners.
- Discharge pressure relief valve.
- Fabricated steel skid under pump and drive.
- V-belt drive assembly.
- Totally enclosed metal belt guard (OSHA approved).
- Valve seat puller.
- Valve seat driver.
- Valve cage wrench.
- Companion flanges.

	Suction Manifold	Discharge Manifold
TEEA	6" 150# ANSI	3" NPT
TEEB	4" 150# ANSI	2" NPT
TEEC	4" 150# ANSI	1-11/16" 10,000 API

**Note:** All installations must contain a pressure relief valve in the discharge line near the pump to help prevent breakage.

**Dimensions:** Length 69.8", Width 50.0", Height 26.8"

### MATERIAL SPECIFICATIONS

SERVICE	TYPE	CYLINDER	PACKING	STUFFING BOX	COMPONENT	MATERIAL
TEEA	Low Pressure	ASTM B-148-9D	Buna-N Non-	ASTM B-148-9D	Crankshaft	Cast Nodular Iron
		Aluminum Bronze	Adjustable Type	Aluminum Bronze	Connecting Rods	Cast Nodular Iron
TEEB	Medium Pressure	ASTM B-148-9D	Buna-N Non-	ASTM B-148-9D	Crossheads	Cast Nodular Iron
		Aluminum Bronze	Adjustable Type	Aluminum Bronze	Frame	Cast Iron
TEEC	High Pressure	ASTM A514	Buna-N Non-	ASTM A536	Bearing-Main	Tapered Roller
		Block Steel	Adjustable Type	Cast Nodular Iron	Bearing-Crankpin	Cast Bronze

\*Materials listed are furnished as standard equipment. Alternate materials available upon request.

**Gardner  
Denver**

1800 Gardner Expressway  
Quincy, Illinois 62301  
(800)682-9868 Fax:(217)224-7814



119 Nolan Road  
Broussard, LA 70518 **PUMPS & COMPRESSORS, LLC**  
(337)837-2701 Fax:(337)837-3250  
www.candbsales.com sales@candbsales.com

