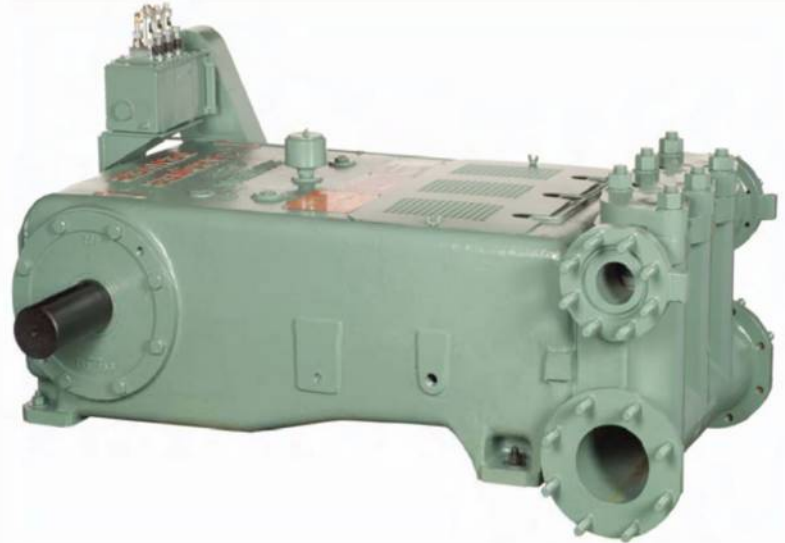




TFE (GD-205T) CONTINUOUS DUTY PLUNGER PUMP

SPECIFICATIONS:

Maximum BHP: 205 (153 kw)
Maximum RPM: 370
No. of Plungers: 3
Stroke Length: 5 in. (127 mm)
Plunger Load: 13,165 lbs. (5,970 kg)
Discharge Hydrostatic Test Pressure
 LP – 3,000 psi (211 kg/cm²)
 MP – 7,410 psi (521 kg/cm²)
 HP – 15,000 psi (1055 kg/cm²)
Oil Capacity: 14.5 gal. (55 liters)
Pump Weight: 3,355 lbs. (1,522 kg)



PERFORMANCE RATINGS

Plunger Size		Maximum Pressure		Displacement per revolution		Gallons Per Minute/Liters at the following RPM:											
						175		200		250		300		350		370	
in.	mm	PSI	kg/cm ²	gal.	liters	GPM	LPM	GPM	LPM	GPM	LPM	GPM	LPM	GPM	LPM	GPM	LPM
LOW PRESSURE ALUMINUM BRONZE FLUID END (TFEA)																	
4.25	108	930	65	0.921	3.486	161	610	184	697	230	871	276	1046	322	1220	341	1290
4.00	102	1050	74	0.816	3.089	143	540	163	618	204	772	245	927	286	1081	302	1143
3.75	95	1195	84	0.717	2.714	125	475	143	543	179	678	215	814	251	950	265	1004
3.50	89	1370	96	0.625	2.366	109	414	125	473	156	591	188	710	219	828	231	875
3.25	83	1585*	111	0.539	2.040	94	357	108	408	135	510	162	612	189	714	199	755
3.00	76	1865*	131	0.459	0.216	80	304	92	347	115	434	138	521	161	608	170	643
MEDIUM PRESSURE ALUMINUM BRONZE FLUID END (TFEB)																	
3.00	76	1865	131	0.459	1.737	80	304	92	347	115	434	138	521	161	608	170	643
2.75	70	2220	156	0.386	1.461	68	256	77	292	97	365	116	438	135	511	143	541
2.50	64	2685	189	0.319	1.207	56	211	64	241	80	302	96	362	112	423	118	447
2.25	57	3315	233	0.258	0.977	45	171	52	195	65	244	77	293	90	342	95	361
2.00	51	3705	260	0.204	0.772	36	135	41	154	51	293	61	232	71	270	75	286
EXTRA HP FORGED STEEL (TFEG), HP BLOCK STEEL (TFEC), HP FORGED STEEL (TFEF) FLUID ENDS																	
2.00	51	4190	295	0.204	0.772	36	135	41	154	51	193	61	232	71	270	75	286
1.88	48	4770	335	0.179	0.678	31	119	36	136	45	169	54	203	63	237	66	251
1.75	44	5475	385	0.156	0.590	27	103	31	118	39	148	47	177	55	207	58	218
1.63	41	6355	447	0.135	0.511	24	89	27	102	34	128	41	153	47	179	50	189
1.50	38	7445	523	0.115	0.435	20	76	23	87	29	109	35	131	40	152	43	161
1.38	35	8860	623	0.096	0.363	17	64	19	73	24	91	29	109	34	127	36	134
1.25	32	10000	703	0.080	0.303	14	53	16	61	20	76	24	91	28	106	30	112

Based on 90% mechanical efficiency and 100% volumetric efficiency.
For applications within shaded area contact Customer Service.

Specifications subject to change without notice.



TFE (GD-205T) CONTINUOUS DUTY PLUNGER PUMP

STANDARD EQUIPMENT

- Oil level gauge.
- Crankshaft type construction.
- Double-extended crankshaft 4.0" (10.16 mm) dia., 8.0" (20.32 mm) long.
- Keyway (L x W x H) 7.1" x 1" x .57" (18.03 x 2.54 x 1.45 mm).
- Turbo lubrication.
- Flanged suction and discharge on either side.
- Stainless steel clamp connections between plungers and push rods.
- Removable stuffing boxes with threaded glands.
- Cradle cover.
- Colmonoy, ceramic, or tungsten carbide plungers.
- Disc style aluminum bronze, stainless steel, or monel valves.
- Wing-guided aluminum bronze, steel, or stainless steel valves.
- Non-adjustable packing standard. Kevlar or double stack packing optional.

ACCESSORIES

- Mechanical lubricator for stuffing box packing.
- Suction stabilizers.
- Discharge pulsation dampeners.
- Discharge pressure relief valve.
- Fabricated steel skid under pump and drive.
- V-belt drive assembly.
- Totally enclosed metal belt guard (OSHA approved).
- Valve seat puller.
- Valve seat driver.
- Valve cage wrench.
- Companion flanges.

	Suction Manifold	Discharge Manifold
TFEA	6" 150# ANSI	3" 2000# API
TFEB	4" 150# ANSI	2" 1500# ANSI
TFEC	3" 300# ANSI	1-13/16" 10,000# API
TFEF	3" 300# ANSI	1-13/16" 10,000# API
TFEG	2" 300# SAE	2" GR14

NOTE: All installations must contain a pressure relief valve in the discharge line near the pump to help prevent breakage.

Dimensions: Length 54.43", Width 47.62", Height 22.12"

MATERIAL SPECIFICATIONS

SERVICE	TYPE	CYLINDER	PACKING	STUFFING BOX	COMPONENT	MATERIAL
TFEA	Low Pressure	ASTM B-148-9D Aluminum Bronze	Buna-N Non-Adjustable Type	ASTM B-148-9D Aluminum Bronze	Crankshaft Connecting Rods	Cast Nodular Iron Cast Nodular Iron
TFEB	Medium Pressure	ASTM B-148-9D Aluminum Bronze	Buna-N Non-Adjustable Type	ASTM B-148-9D Aluminum Bronze	Crossheads Frame	Cast Nodular Iron Cast Iron
TFEC	High Pressure	ASTM A-514 Forged Steel	Buna-N Non-Adjustable Type	ASTM A546 Cast Nodular Iron	Bearing-Main Bearing-Crankpin	Tapered Roller Steel Lined with Tin & Babbit
TFEF	High Pressure	ASTM A-514 Block Steel	Buna-N Non-Adjustable Type	ASTM A546 Carbon Steel	Bushing-Crosshead	Bronze
TFEG	Extra High Pressure	ASTM A-514 Forged Steel	Buna-N Non-Adjustable Type	ASTM A546 Cast Nodular Iron		

*Materials listed are furnished as standard equipment. Alternate materials available upon request.

**Gardner
Denver**

1800 Gardner Expressway
Quincy, Illinois 62301
(800)682-9868 Fax:(217)224-7814



119 Nolan Road
Broussard, LA 70518
(337)837-2701 Fax:(337)837-3250
www.candbsales.com sales@candbsales.com

