

# PUMPS



## GD 800HDD

### HORIZONTAL DIRECTIONAL DRILLING PUMP

Built on Gardner Denver's legacy of product innovation in pumping technology, the GD 800HDD pump is designed to serve a wide variety of HDD applications. This compact, lightweight pump features a high rod load and delivers a flow rate of over 1,000 GPM.



#### SPECIFICATIONS

<b>Output Flow</b>	1,010 GPM
<b>Maximum Pressure</b>	1,875 PSI
<b>Maximum Crankshaft Speed</b>	275 RPM
<b>Max Input Power</b>	800 BHP (597 kW)
<b>Gear Ratio</b>	4.6:1
<b>Number of Pistons</b>	5
<b>Stroke Length</b>	6" (152.4 mm)
<b>Weight without GB</b>	6,492 lb (2,944 kg)
<b>Weight with GB</b>	7,483 lb (3,394 kg)
<b>Break Horespower (BHP)</b>	800
<b>Rod Load</b>	53,000 lb (236 kN)
<b>Dimensions without GB</b>	67.51"L x 52.09"W x 30.28"H
<b>Dimensions with GB</b>	67.51"L x 74.37"W x 30.28"H

Note: For max flow applications, please consult GD Engineering for approval.

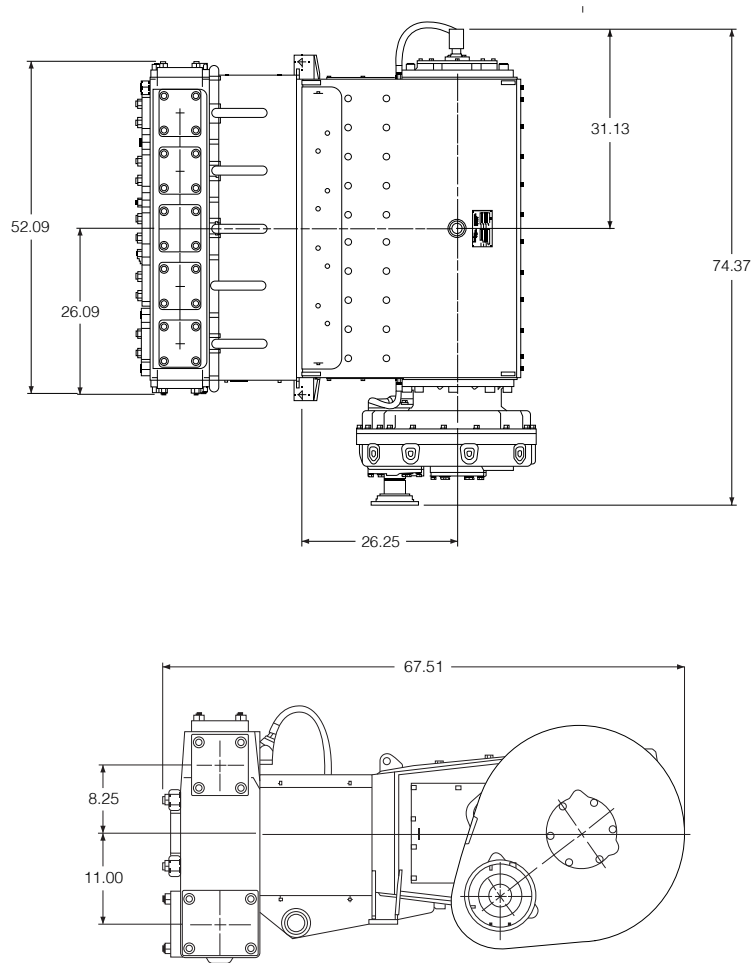
Piston Diameter		Displacement per Revolution		Displacement at Pump RPM (HDD Service)																			
				50				100				150				200				275			
IN	MM	GAL	L	GPM	LPM	PSI	bar	GPM	LPM	PSI	bar	GPM	LPM	PSI	bar	GPM	LPM	PSI	bar	GPM	LPM	PSI	bar
6	152	3.67	13.89	184	695	1874	129	367	1390	1874	129	551	2085	1874	129	734	2780	1680	116	1010	3823	1222	84
Input Power			HP	223				446				669				800				800			
			kW	166				333				499				597				597			

## PUMPS

# GD 800HDD

## HORIZONTAL DIRECTIONAL DRILLING PUMP

### SPECIFICATIONS



NOTE: Line drawings are available from engineering per application.

# Gardner Denver

### STANDARD FEATURES

- Featuring Gardner Denver's industry leading Redline Consumables for extended maintenance intervals
- Full cast ductile iron frame fluid end offers superior strength
- Large valve cover access panels for easy valve change outs
- All parts 100% made in the USA, guaranteeing build quality and reliability in the field
- Upgraded internal components and seal housing prevent contamination
- Coated crankshaft bearings to extend power end life
- Next generation fluid end technology with innovative geometry to minimize stress
- Left or right side suction and discharge connections
- Left or right handed keyed shaft extension
- Pressure lubricated power end (via engine driven oil pump - not supplied)
- Clamp style connections between piston rod and crosshead extensions
- Rod wash spray bar and baffles
- Multiple Drive Options:
  - Hydraulic Drive
  - Teardrop Spur Gearbox
  - Planetary Gearbox

### CONNECT WITH US

[www.gardnerdenverpumps.com](http://www.gardnerdenverpumps.com)

1-866-GDPumps | +1-918-GDPumps

 GardnerDenverPumps

 @GDPumps

 GardnerDenverPumpsTV

 GardnerDenverPumps